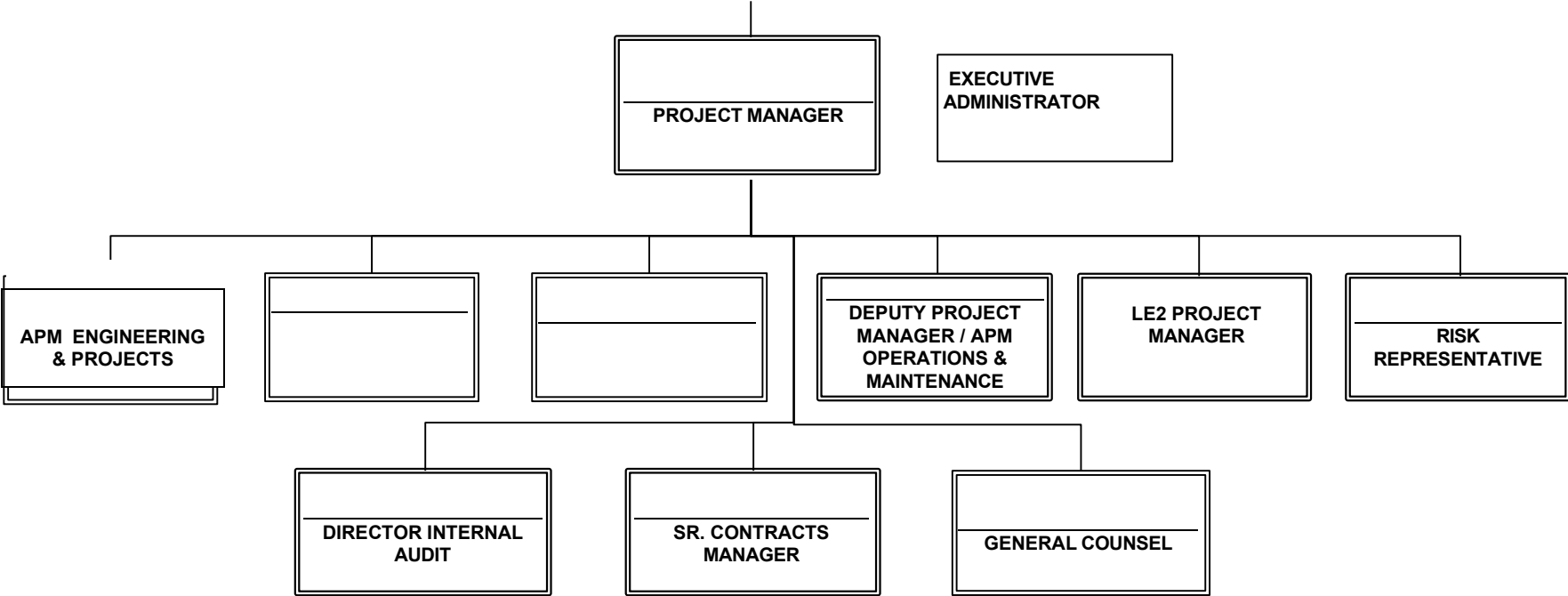
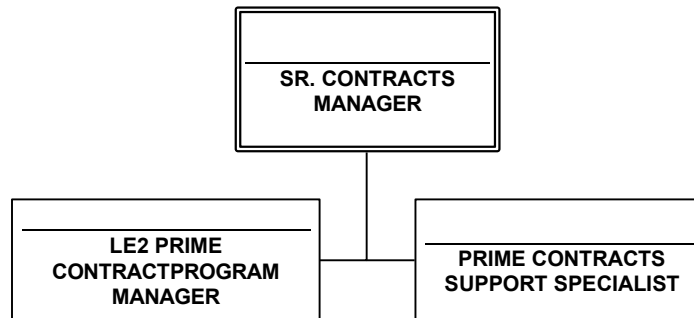


M&O Organizational Chart - 2024

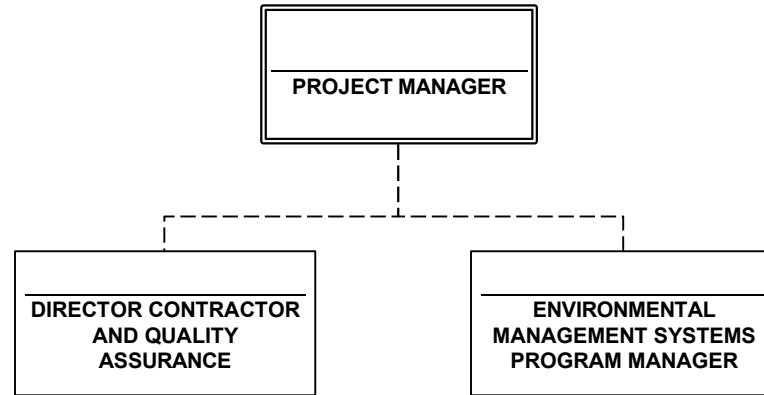
PROJECT MANAGEMENT



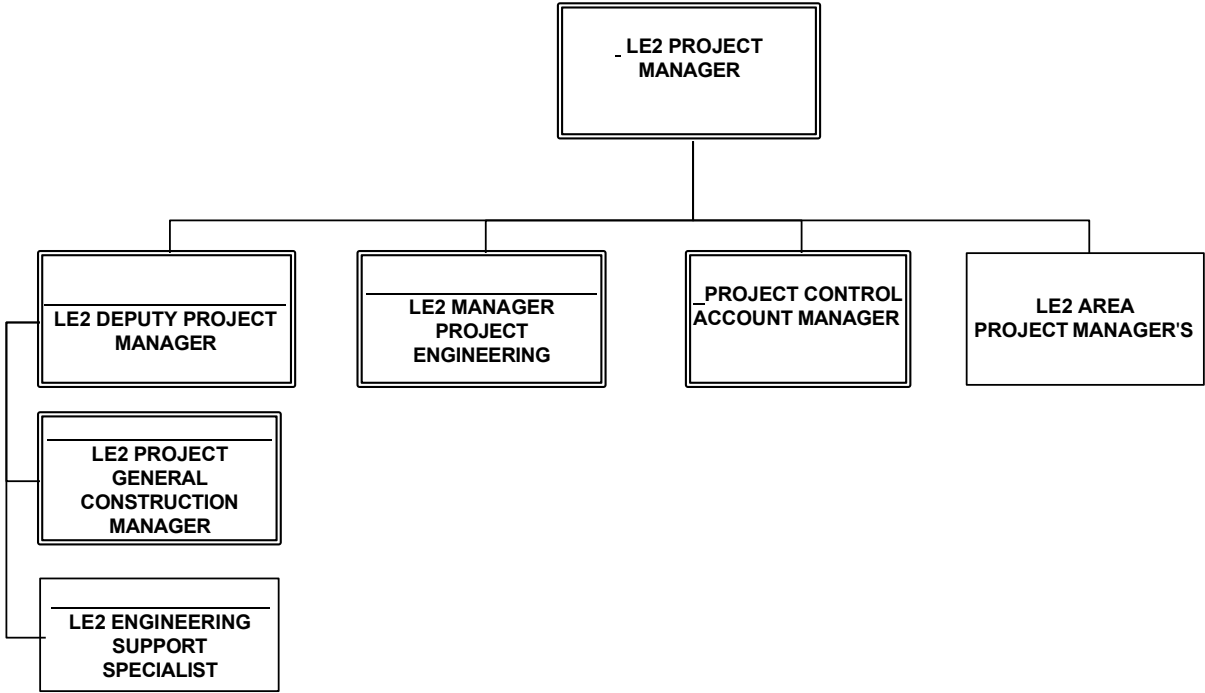
PRIME CONTRACTS



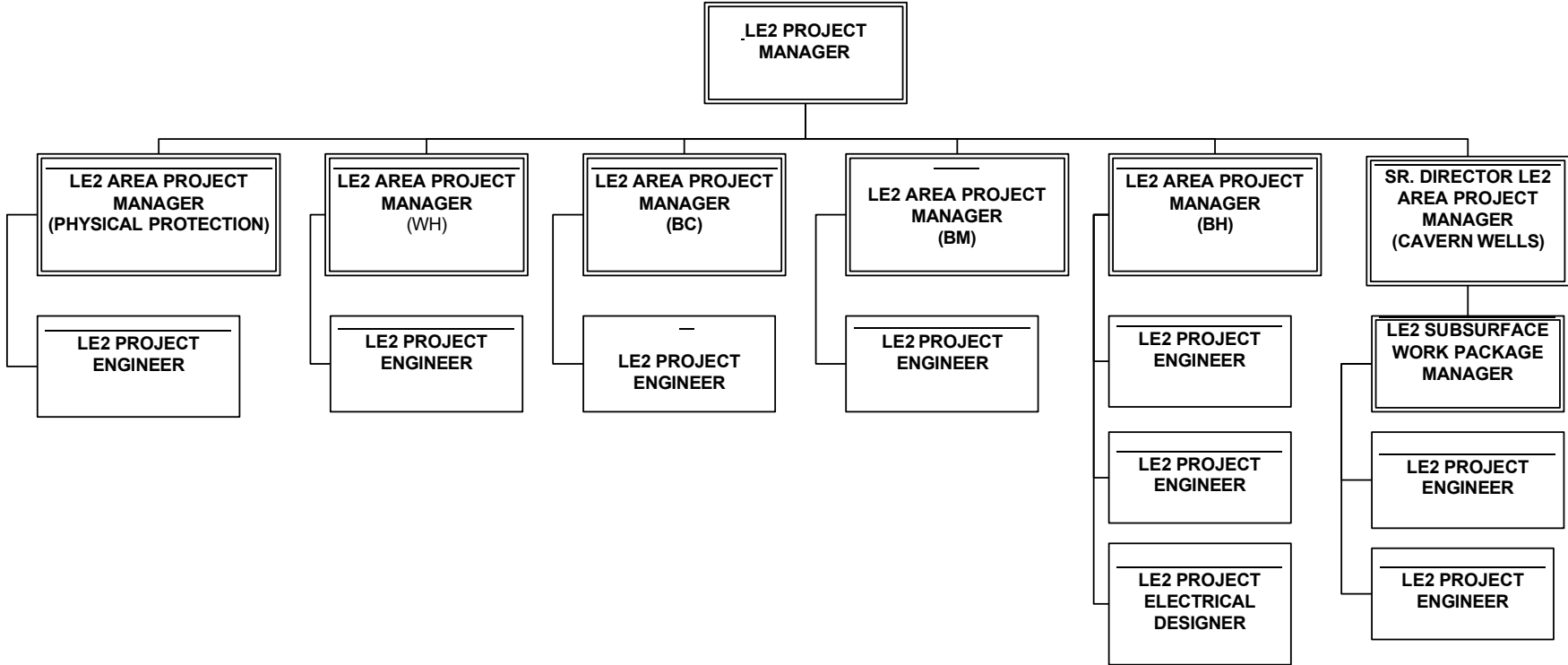
ISO REPRESENTATIVES



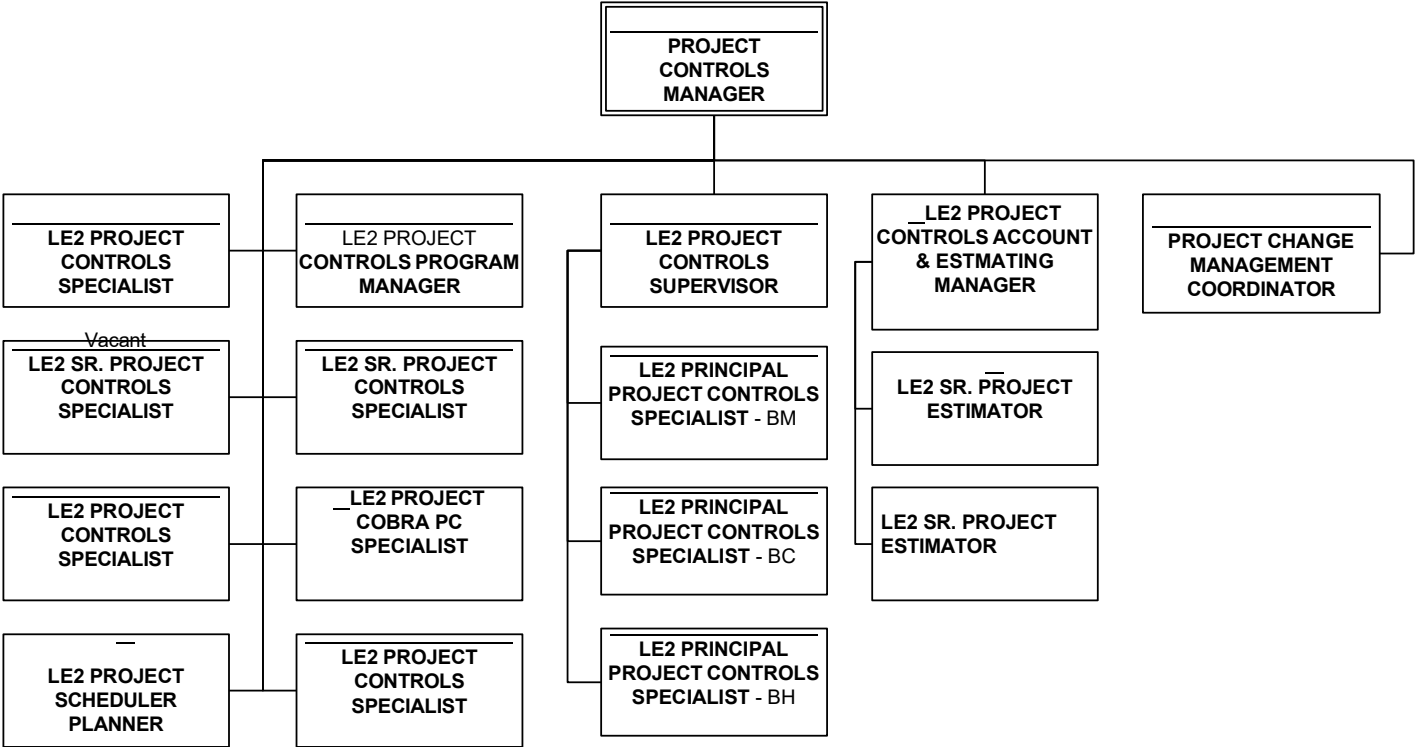
**LIFE EXTENSION 2
PROJECT MANAGEMENT**



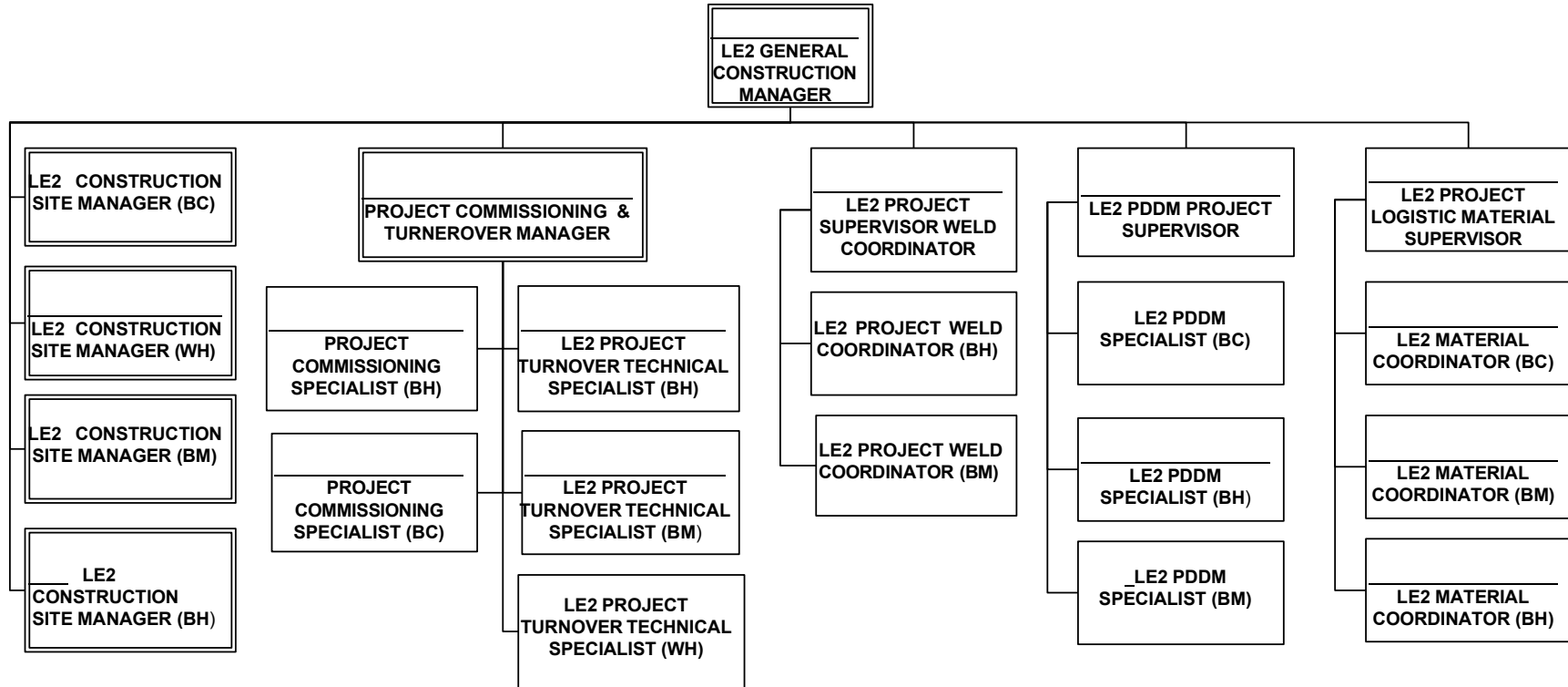
**LIFE EXTENSION 2
AREA PROJECT MANAGEMENT**



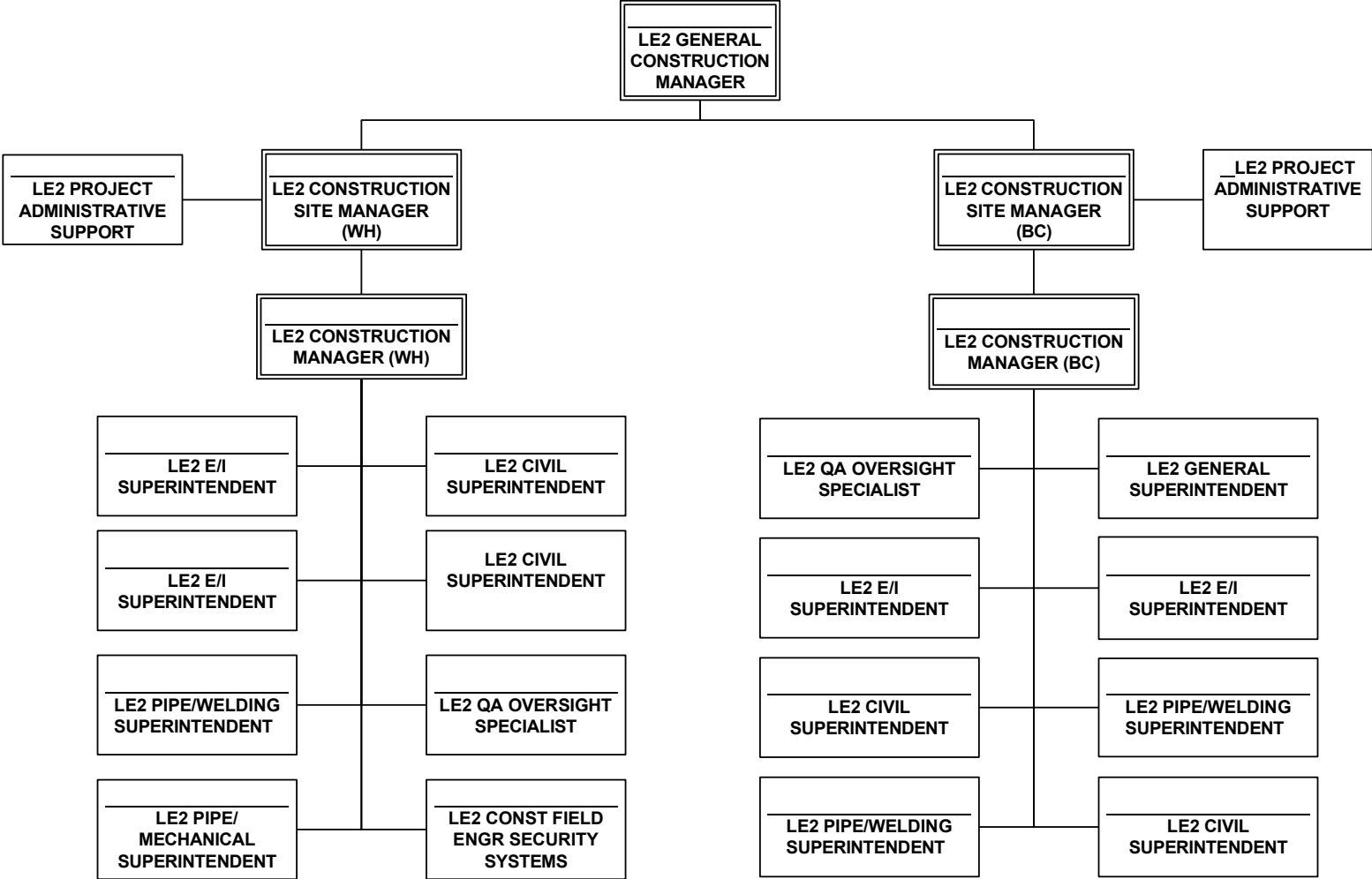
**LIFE EXTENSION 2
CONTROLS AND RISK**



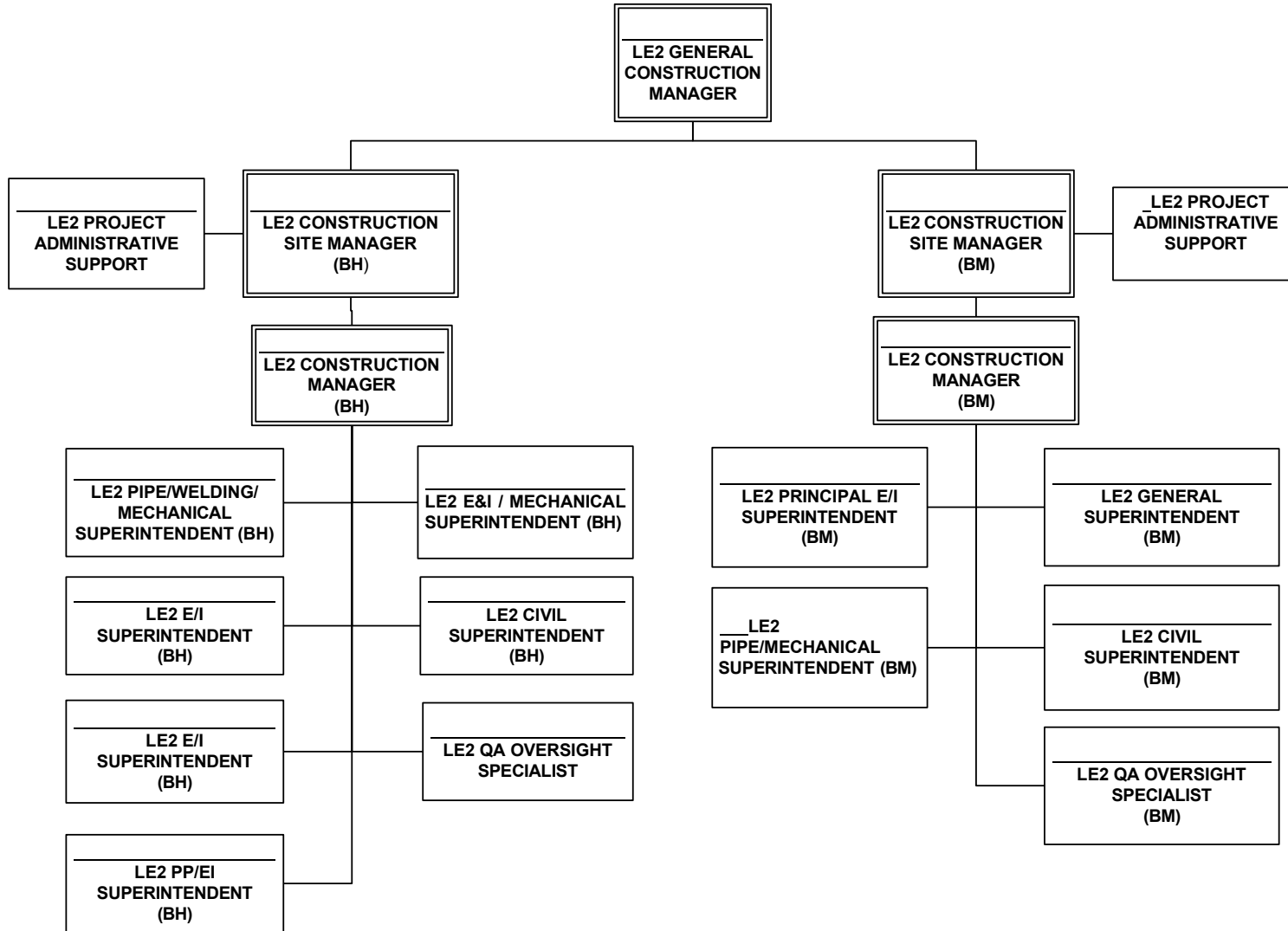
**LIFE EXTENSION 2
CONSTRUCTION MANAGEMENT ORGANIZATION**



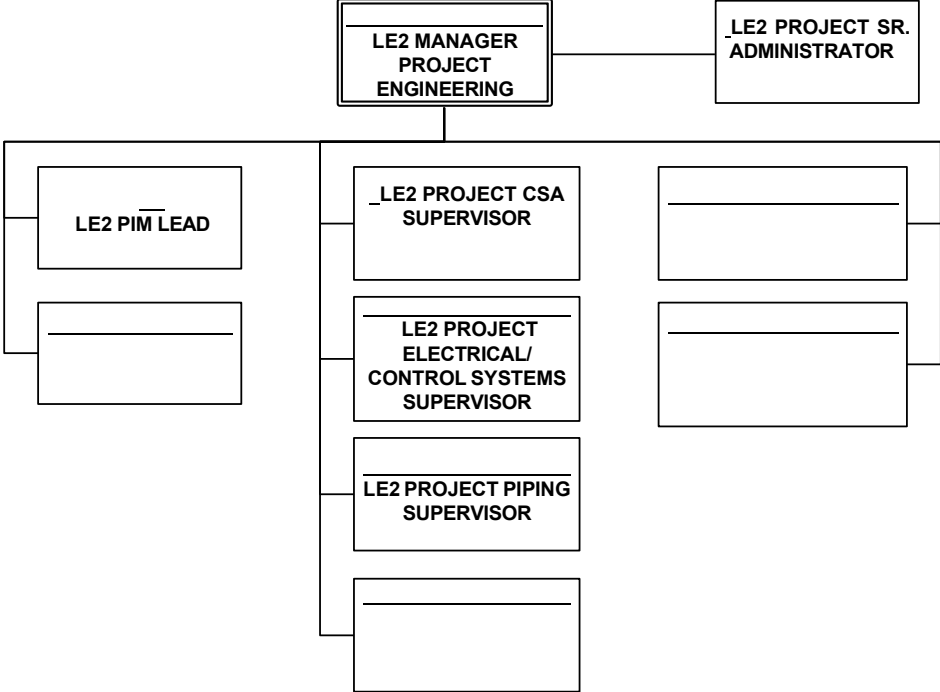
**LE2 CONSTRUCTION MANAGEMENT ORGANIZATION
LA Sites**



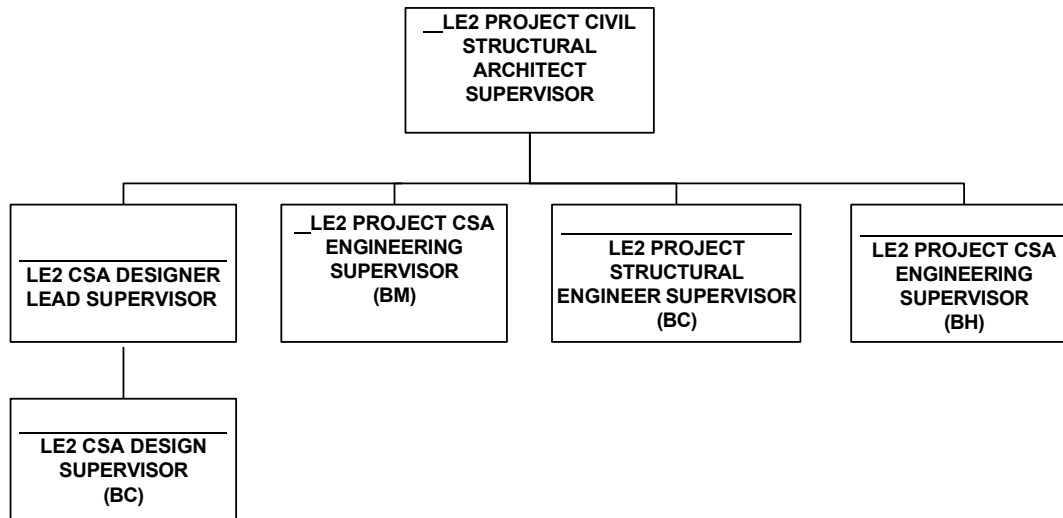
**LE2 CONSTRUCTION MANAGEMENT ORGANIZATION
TX Sites**



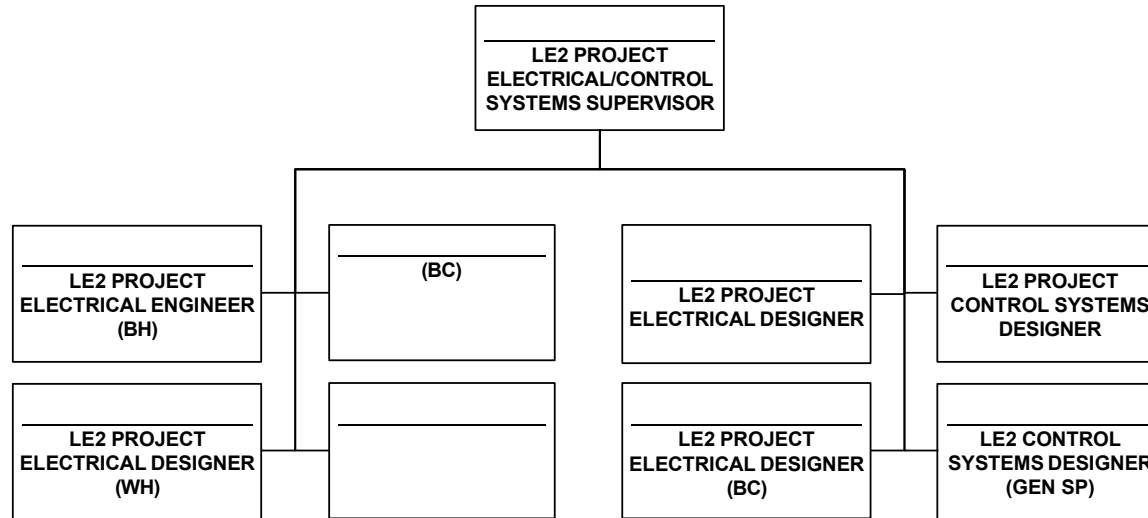
**LIFE EXTENSION 2
ENGINEERING**



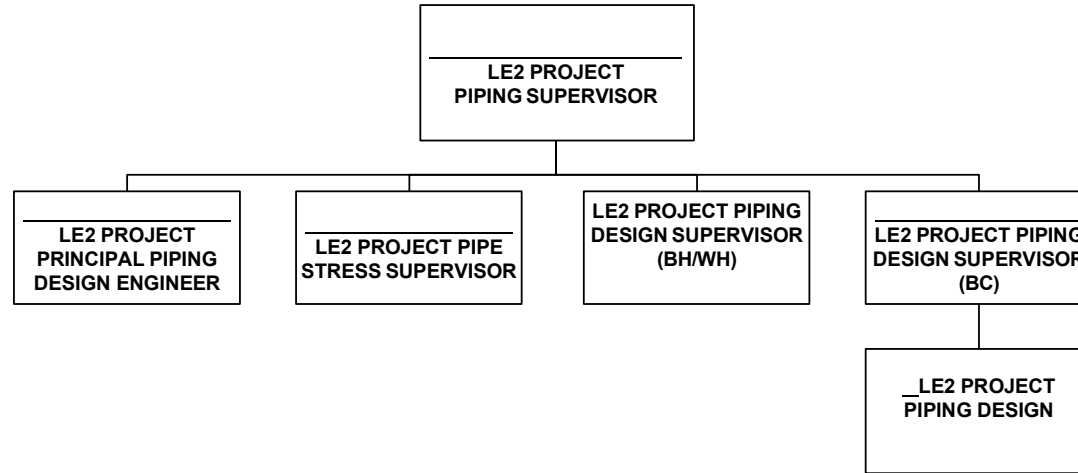
**LIFE EXTENSION 2
CIVIL STRUCTURAL ARCHITECTURAL ENGINEERING & DESIGN**



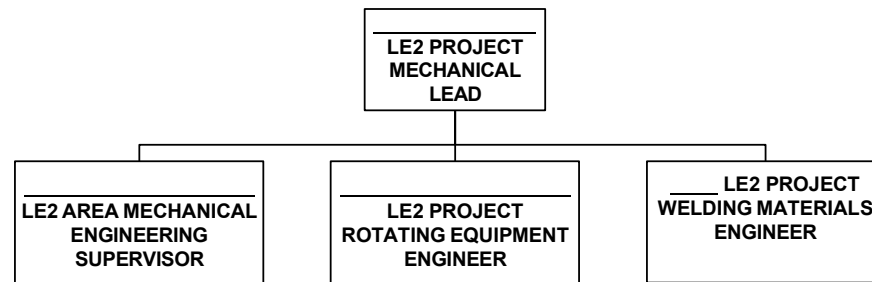
**LIFE EXTENSION 2
ELECTRICAL ENGINEERING & DESIGN**



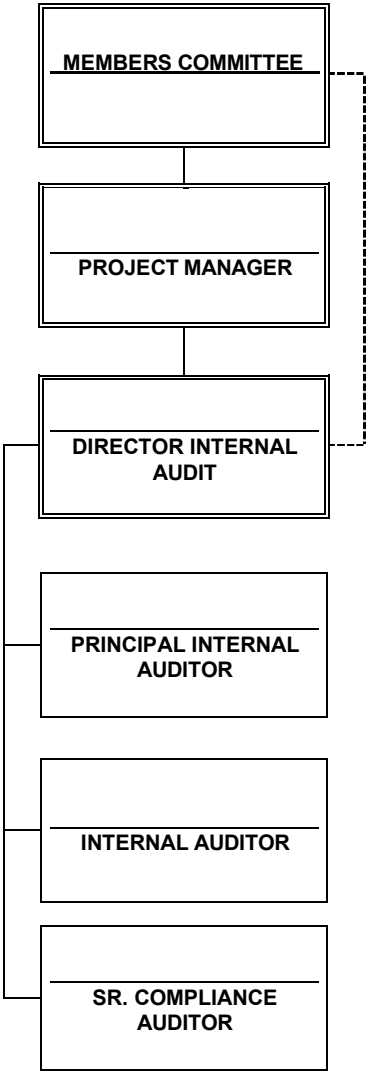
**LIFE EXTENSION 2
PIPING ENGINEERING & DESIGN**



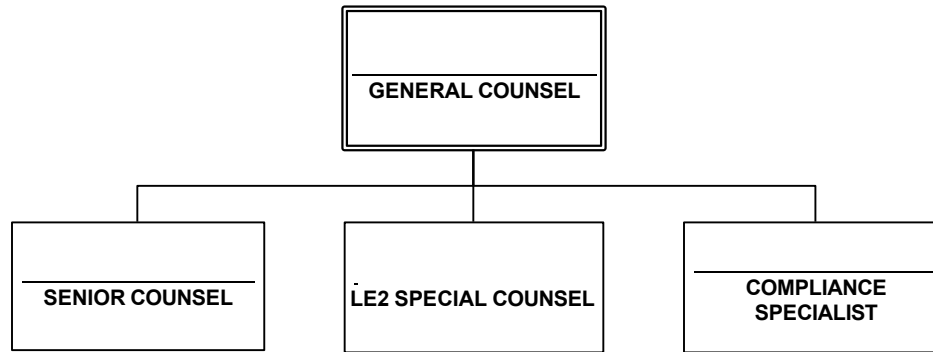
**LIFE EXTENSION 2
MECHANICAL ENGINEERING**



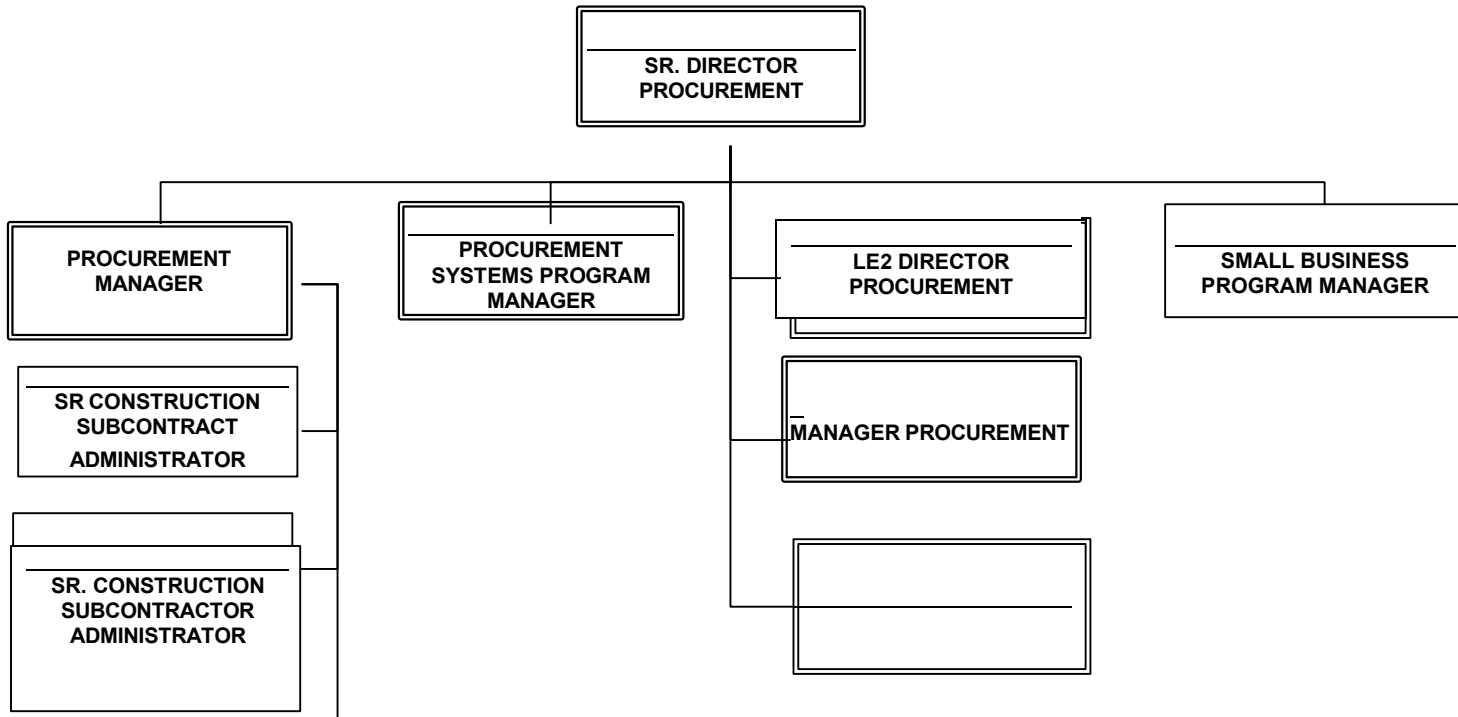
INTERNAL AUDIT



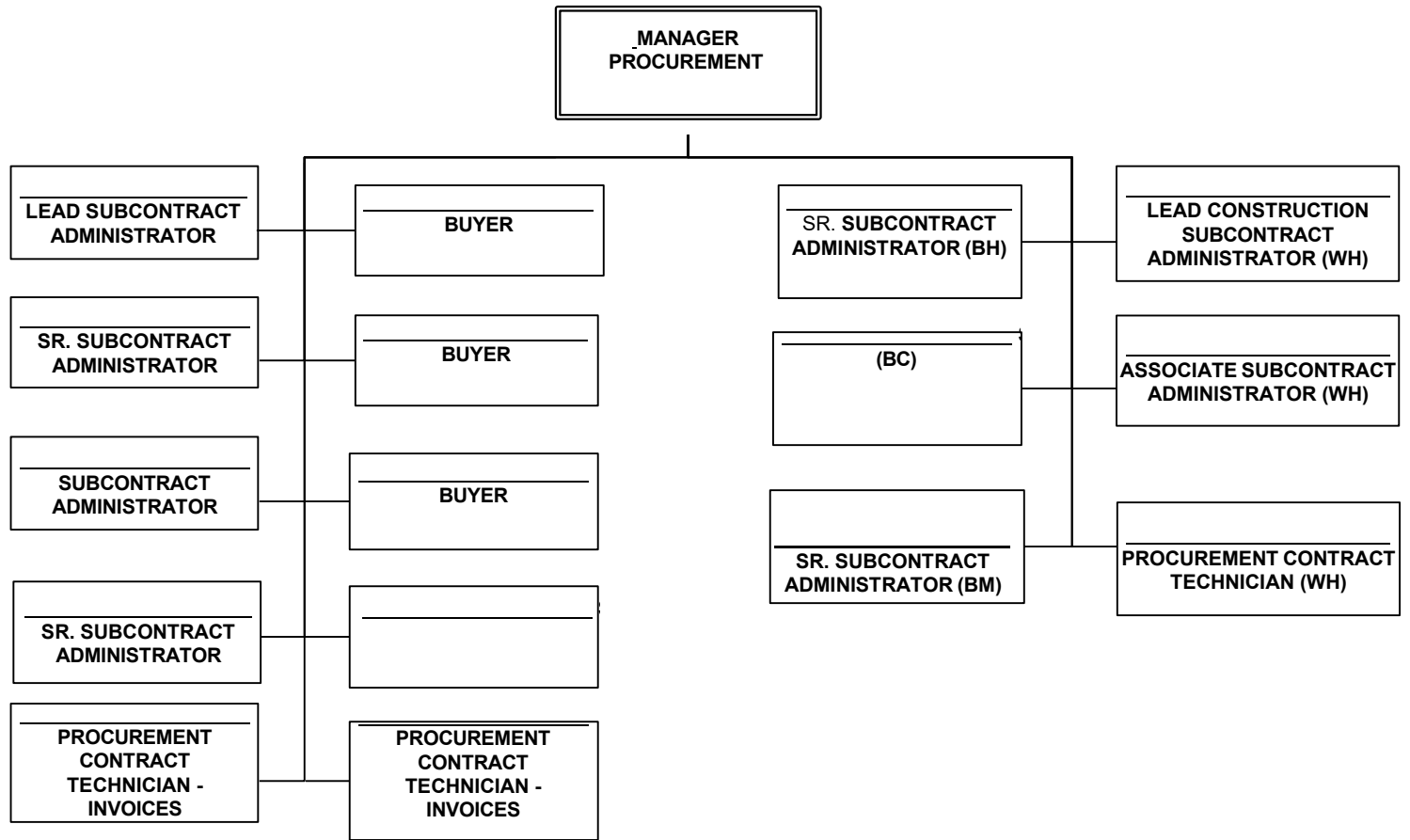
GENERAL COUNSEL



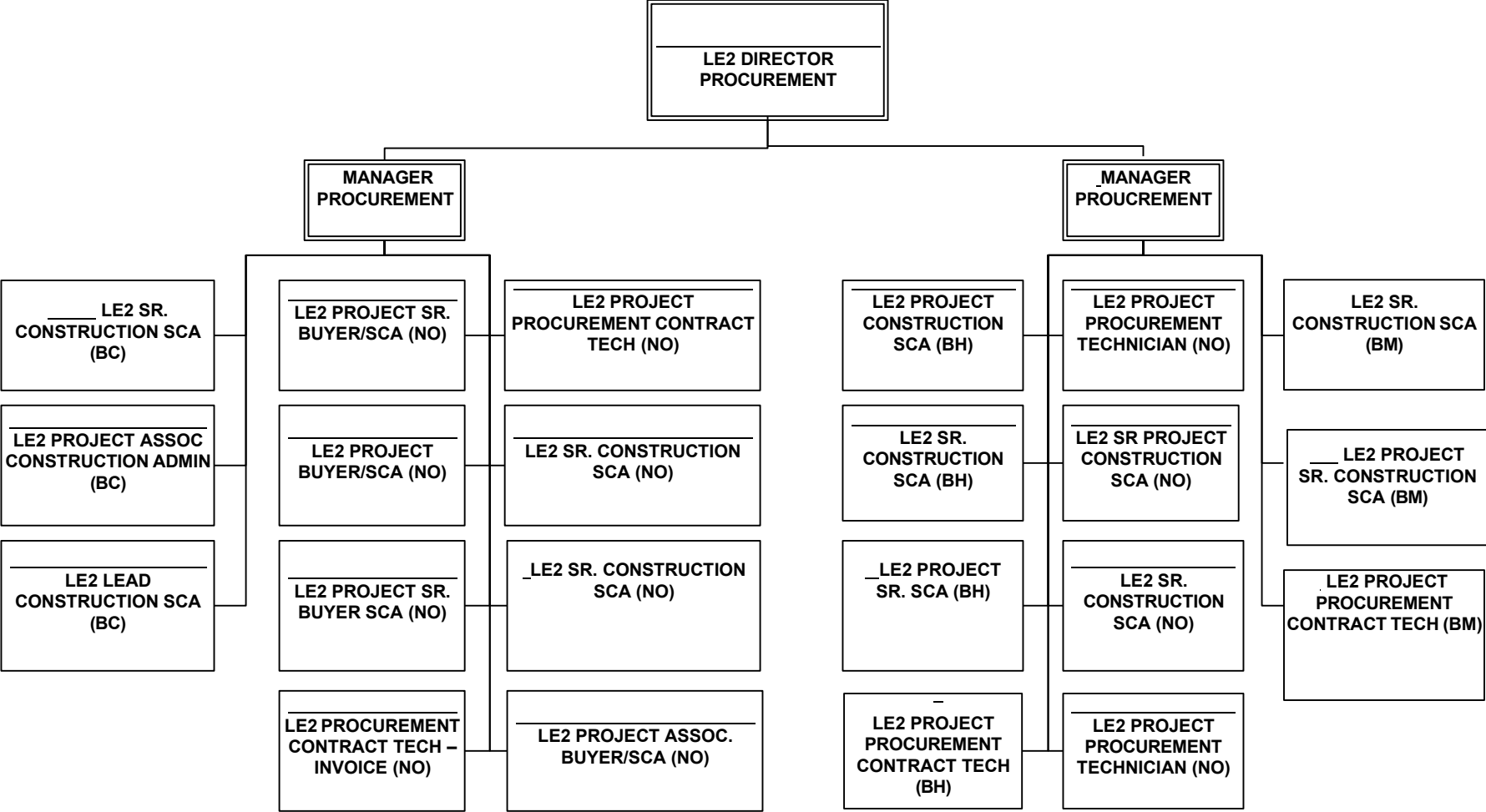
PROCUREMENT



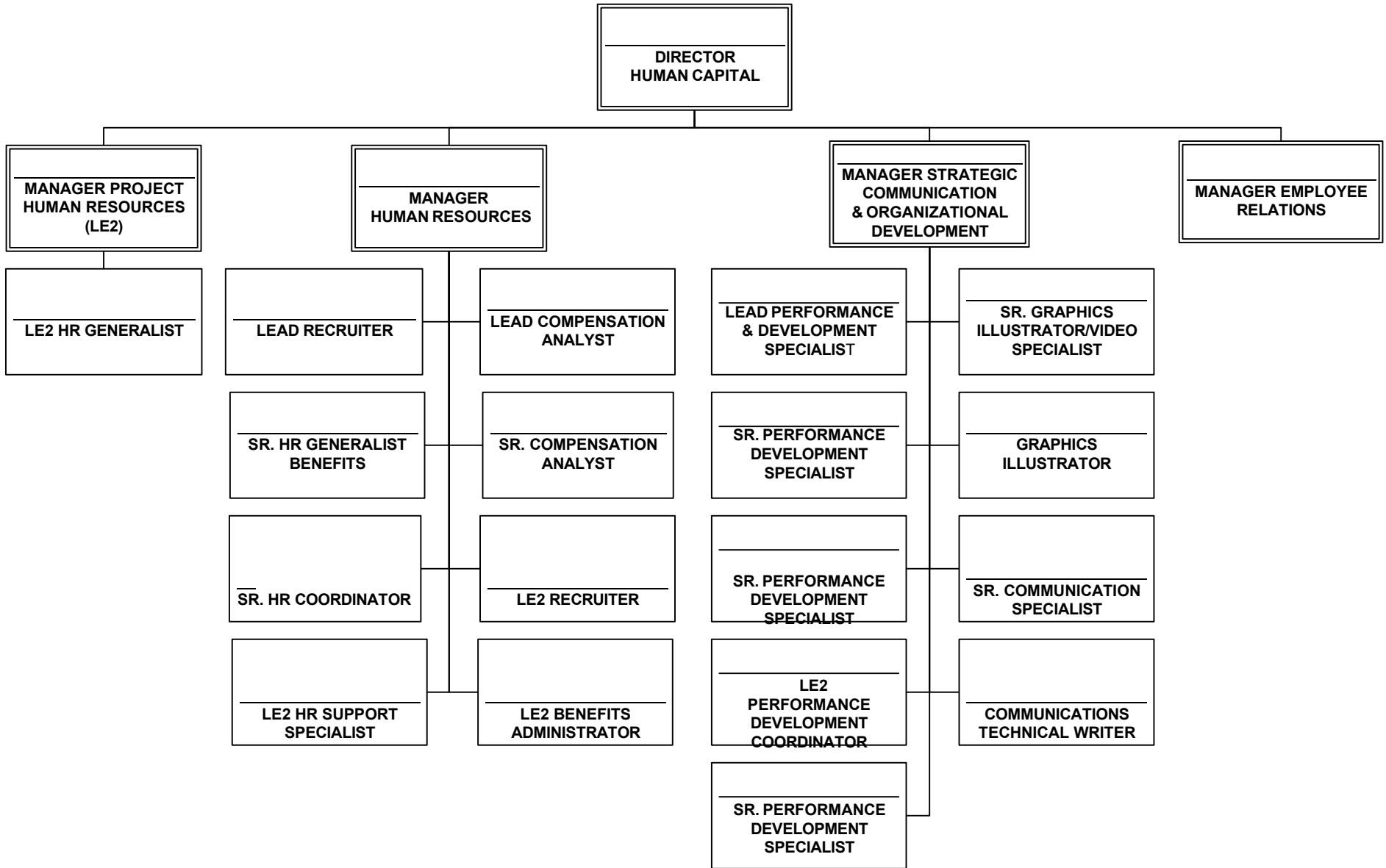
PROCUREMENT



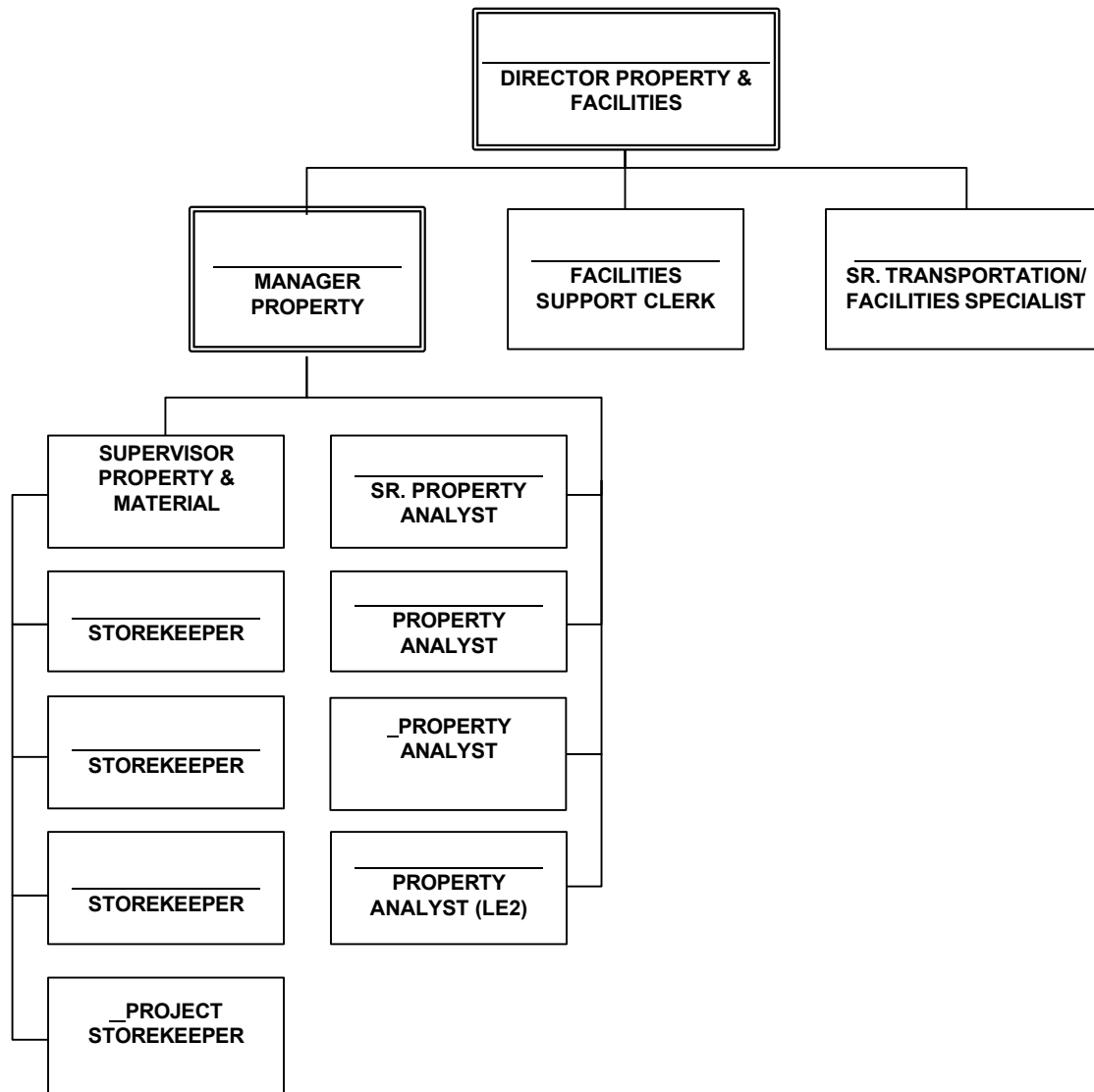
LE2 PROCUREMENT



HUMAN CAPITAL



**PROPERTY & FACILITIES PROPERTY
(COMMUNITY OUTREACH OFFICE)**



FINANCIAL OPERATIONS

DIRECTOR FINANCE

MANAGER BUDGET
& COST CONTROL

MANAGER FINANCIAL
SERVICES

LE2 SR. BUSINESS
ASSURANCE ANALYST

SR. BUSINESS
ASSURANCE ANALYST

SR. COST ENGINEER

ASSOCIATE BUSINESS
ANALYST

LEAD FINANCIAL
SERVICES
ACCOUNTANT

LEAD GL
ACCOUNTANT

LEAD COST CONTROL
ENGINEER

SR. COST ENGINEER

LE2 ASSOCIATE
ACCOUNTANT

LEAD PAYROLL
ACCOUNTANT

LE2 PROJECT SR. COST
ENGINEER

COST ENGINEER

ASSOCIATE
ACCOUNTANT

PAYROLL
ACCOUNTANT

SR. COST ENGINEER

COST ENGINEER

STAFF
ACCOUNTANT

PAYROLL TAX
ACCOUNT

COST ENGINEER

SR. COST ENGINEER

DATA SYSTEMS

SR. DIRECTOR
DATA SYSTEMS

MANAGER NETWORK
OPERATIONS

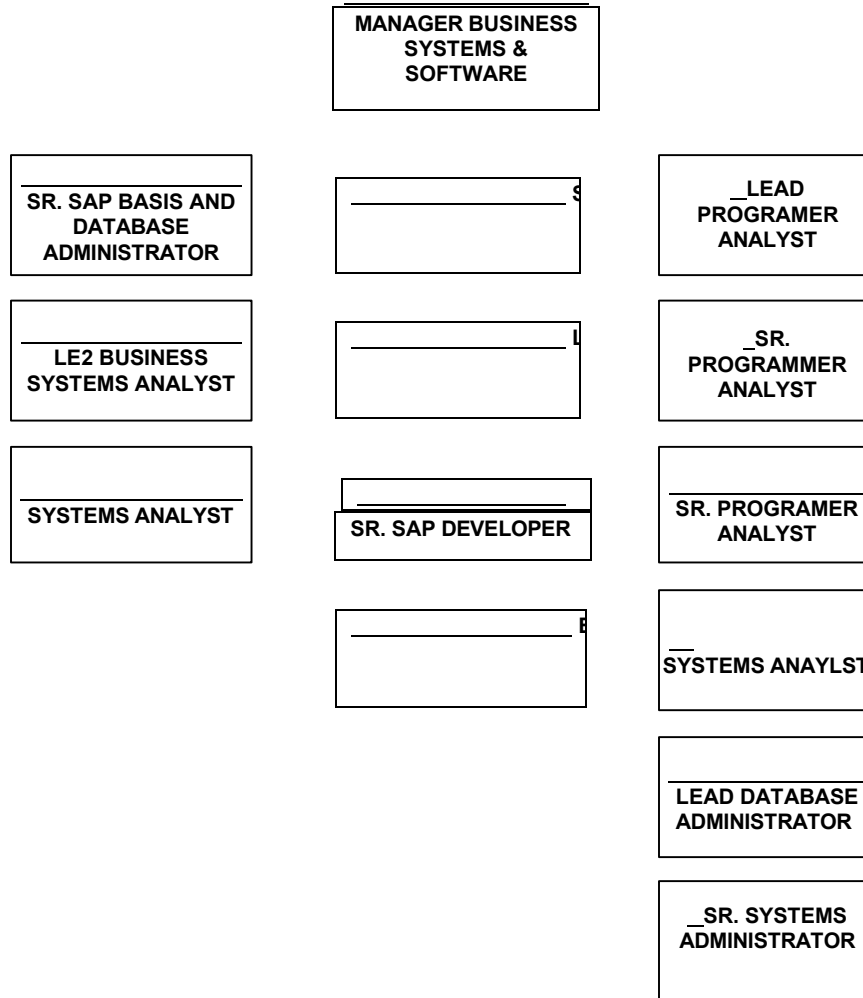
MANAGER
PROJECT SUPPORT

MANAGER
CYBER SECURITY
PROGRAM CISO

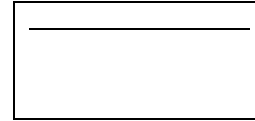
MANAGER
BUSINESS
SYSTEMS &
SOFTWARE

MANAGER
CUSTOMER
SERVICES

**DATA SYSTEMS
BUSINESS SYSTEMS & SOFTWARE**



DATA SYSTEMS NETWORK OPERATIONS



SUPERVISOR DATA
CENTER OPERATIONS

SUPERVISOR DATA
CENTER ENGINEER

LEAD NETWORK
ENGINEER

SR. NETWORK
ENGINEER

NETWORK ENGINEER

SR. NETWORK
ENGINEER

NETWORK
ENGINEER

SR. NETWORK
ENGINEER

SR. NETWORK
ENGINEER

NETWORK ENGINEER

SR. NETWORK
ENGINEER

SR. NETWORK
ENGINEER

PRINCIPAL NETWORK
ENGINEER

**DATA SYSTEMS
CUSTOMER SERVICE**

MANAGER
CUSTOMER
SERVICES

LE2 DESKTOP
ENGINEER

SR. DESKTOP
ENGINEER

CUSTOMER SERVICE
COORDINATOR

SR. DESKTOP
TECHNICIAN

SR. DESKTOP
TECHNICIAN

DESK TOP
TECHNICIAN

SR. DESKTOP SERVICE
ENGINEER

SR. DESK TOP
TECHNICIAN

SR. DS FIELD SERVICE
ENGINEER

DESK TOP TECHNICIAN

LE2 SCCM ENGINEER

LE2 DESK TOP
TECHNICIAN

LE2 DESK TOP
ENGINEER

**DATA SYSTEMS
PROJECT SUPPORT**

**MANAGER
PROJECT SUPPORT**

**SUPERVISOR DATA
SYSTEMS PROJECT
SUPPORT**

**LEAD CONFIGURATION
MANAGEMENT ENGINEER**

**SR. IT PROJECT
MANAGER**

**LEAD DOCUMENT &
RECORDS SPECIALIST**

**SR. CONFIGURATION
DATA
MANAGEMENT ANALYST**

**PROJECT
COORDINATOR**

**INFORMATION
MANAGEMENT
SUPPORT SPECIALIST**

**LE2 PROJECT SUPPORT
ANALYST**

**DATA SYSTEMS
CYBER SECURITY**

CHIEF
INFORMATION
SECURITY OFFICER

LE2 PRINCIPAL
CYBER SECURITY
ARCHITECT

LE2 DEPUTY CHIEF
INFORMATION
SECURITY OFFICER

SUPERVISOR
INFORMATION
SYSTEMS SECURITY
OFFICER

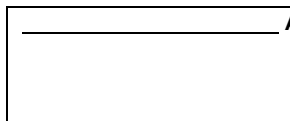
SR. CYBER
SECURITY
ENGINEER (TN)

CYBER SECURITY
ENGINEER

SR. CYBER
SECURITY
ENGINEER

CYBER SECURITY
ENGINEER

SAFETY AND TECHNICAL SERVICES



**ESH & EP
SUPPORT SPECIALIST**

**DEPUTY APM SAFETY &
TECHNICAL SERVICES**

**DIRECTOR
ENVIRONMENTAL
DEPARTMENT &
SUSTAINABILITY**

**DIRECTOR
SAFEGUARDS &
SECURITY**

**DIRECTOR
CONTRACTOR
& QUALITY ASSURANCE**

ENVIRONMENTAL SAFETY HEALTH

ENVIRONMENTAL

DIRECTOR
ENVIRONMENTAL
& SUSTAINABILITY

MANAGER
ENVIRONMENTAL
QUALITY & PROJECTS

SUSTAINABILITY
PROGRAM
MANAGER

ENVIRONMENTAL
COMPLIANCE
PROGRAM MANGER

ENVIRONMENTAL
COMPLIANCE
SPECIALIST

AIR QUALITY
SPECIALIST

SR. ENVIRONMENTAL
COMPLIANCE
SPECIALIST

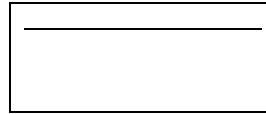
ENVIRONMENTAL
COMPLIANCE
PROGRAM MGR-WASTE

CHEMICAL
MANAGEMENT
SPECIALIST
(Part-time)

ENVIRONMENTAL
COMPLIANCE
SPECIALIST CHEMICAL
MANAGEMENT

LE2 ENVIRONMENTAL
COMPLIANCE
SPECIALIST

SAFETY, HEALTH AND EMERGENCY PREPAREDNESS



SITE ES&H
MANAGER (BC)

MANAGER
SAFETY

MANAGER
EMERGENCY
PREPAREDNESS

SITE ES&H
MANAGER (WH)

LE2 MANAGER
SAFETY &
HEALTH

SR. SAFETY AND
HEALTH
COORDINATOR

SITE ES&H
MANAGER (BH)

MANAGER
INDUSTRIAL
HYGIENE

SITE ES&H
MANAGER (BM)

**SAFETY, HEALTH AND
EMERGENCY PREPAREDNESS**

MANAGER SAFETY

**SUPERVISOR
SAFETY & HEALTH**

**SR. SAFETY AND
HEALTH SPECIALIST**

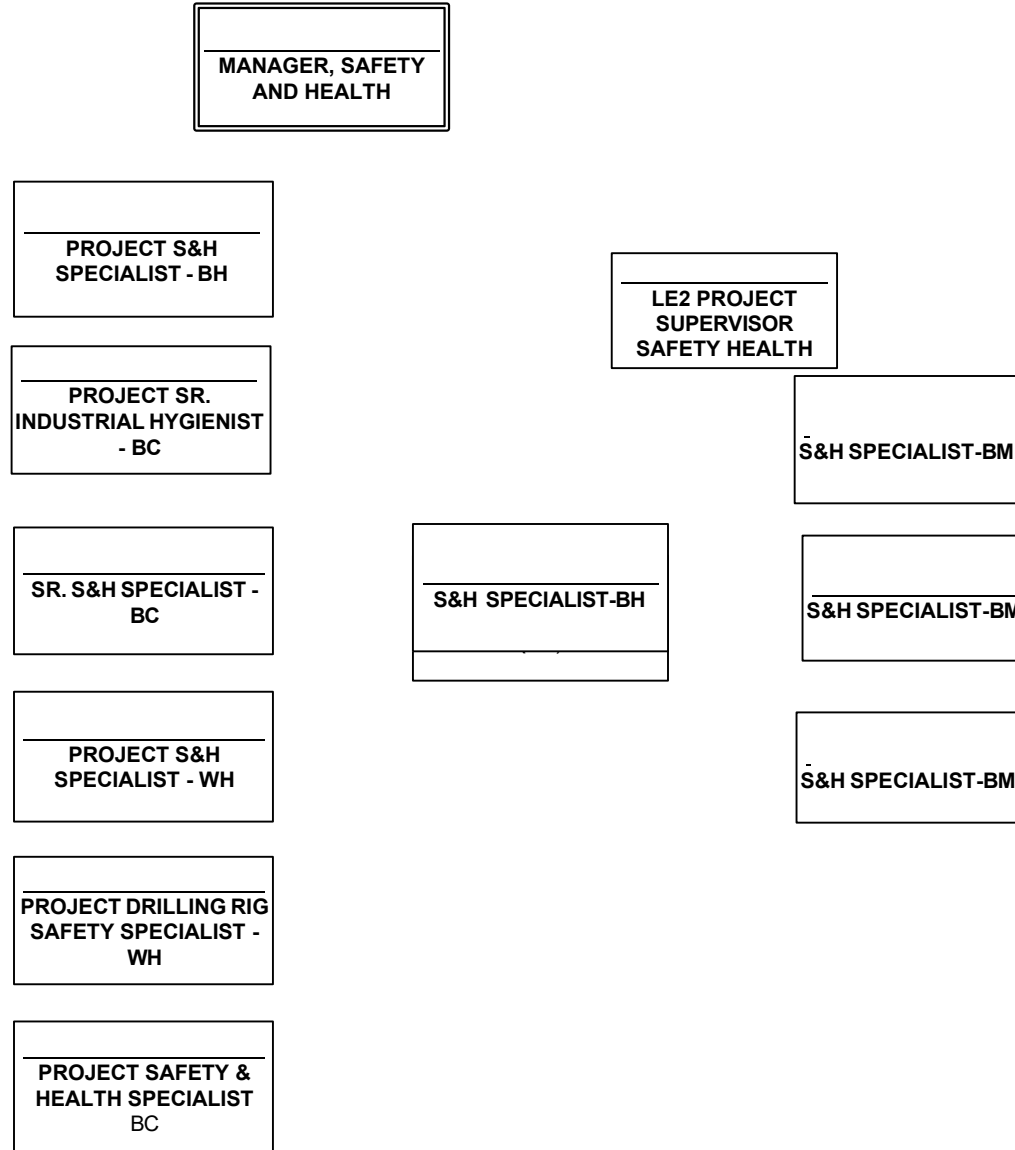
**WORKOVER SAFETY
ANALYST**

SR. SAFETY ANALYST

**SR. SAFETY AND
HEALTH SPECIALIST**

**_SR. SAFETY &
HEALTH SPECIALIST**

LE2 SAFETY AND HEALTH



**SAFETY, HEALTH AND
INDUSTRIAL HYGIENE**

**MANAGER
INDUSTRIAL HYGIENE**

**SR.
INDUSTRIAL
HYGIENIST**

**OCCUPATIONAL
HEALTH
SPECIALIST**

**SR. INDUSTRIAL
HYGIENIST**

EMERGENCY PREPAREDNESS

**MANAGER
EMERGENCY
PREPAREDNESS**

**LEAD EMERGENCY
PREP SPECIALIST**

**SR. FIRE
PROTECTION
SPECIALIST**

**SR. EMERGENCY
PREPAREDNESS
SPECIALIST**

**SR. EMERGENCY
RESPONSE SPECIALIST**

**COMMUNICATIONS &
COMSEC
ADMINISTRATOR**

**SR. EMERGENCY
PREP SPECIALIST**

SECURITY

DIRECTOR SAFEGUARDS &
SECURITY

MANAGER SECURITY
OPERATIONS

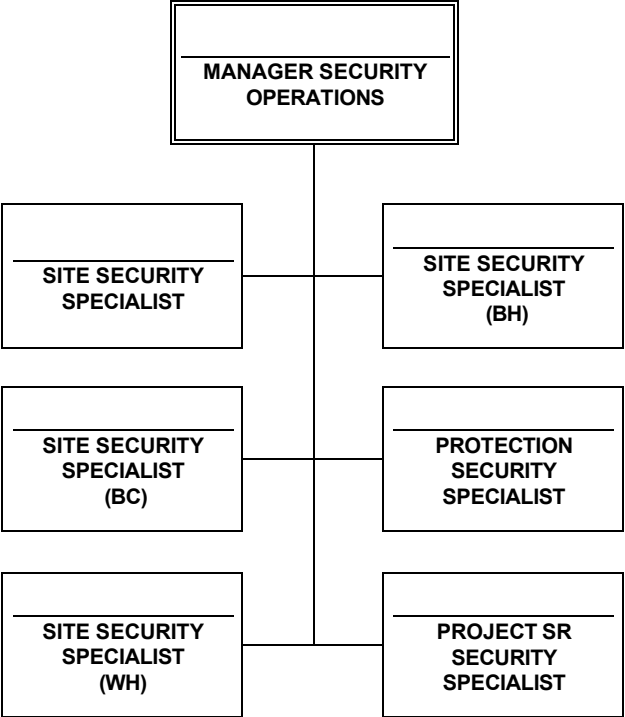
MANAGER SECURITY
SERVICES

MANAGER
PLANS AND EXERCISES

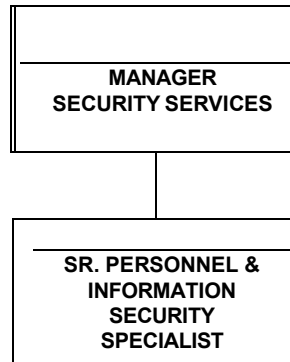
MANAGER
SECURITY SUPPORT
SERVICES

SECURITY TECHNICAL
EVALUATION SPECIALIST

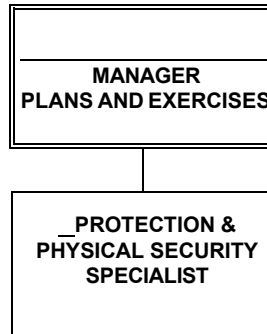
SECURITY



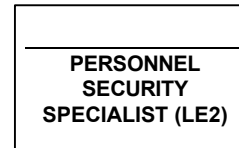
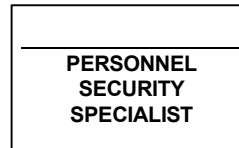
SECURITY



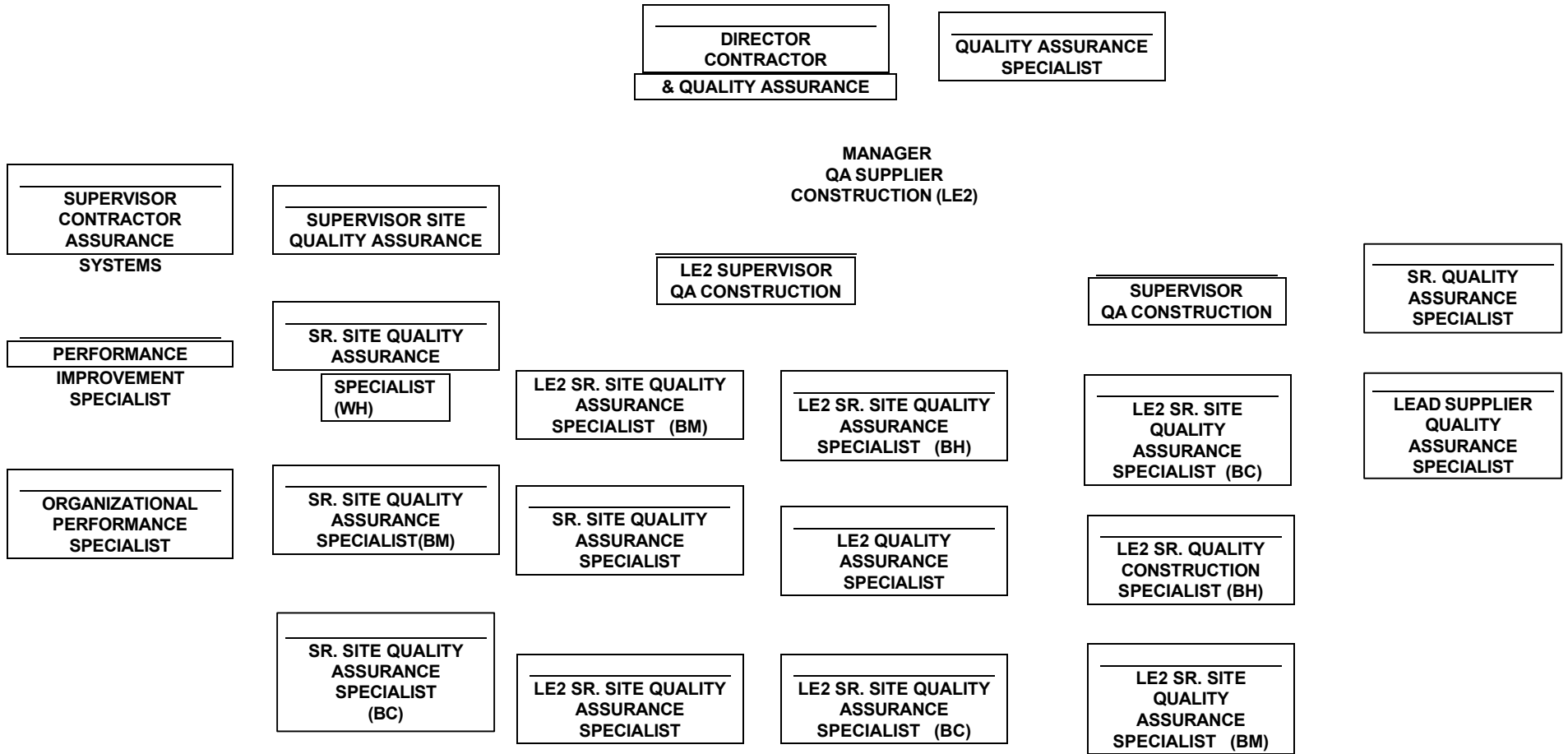
SECURITY



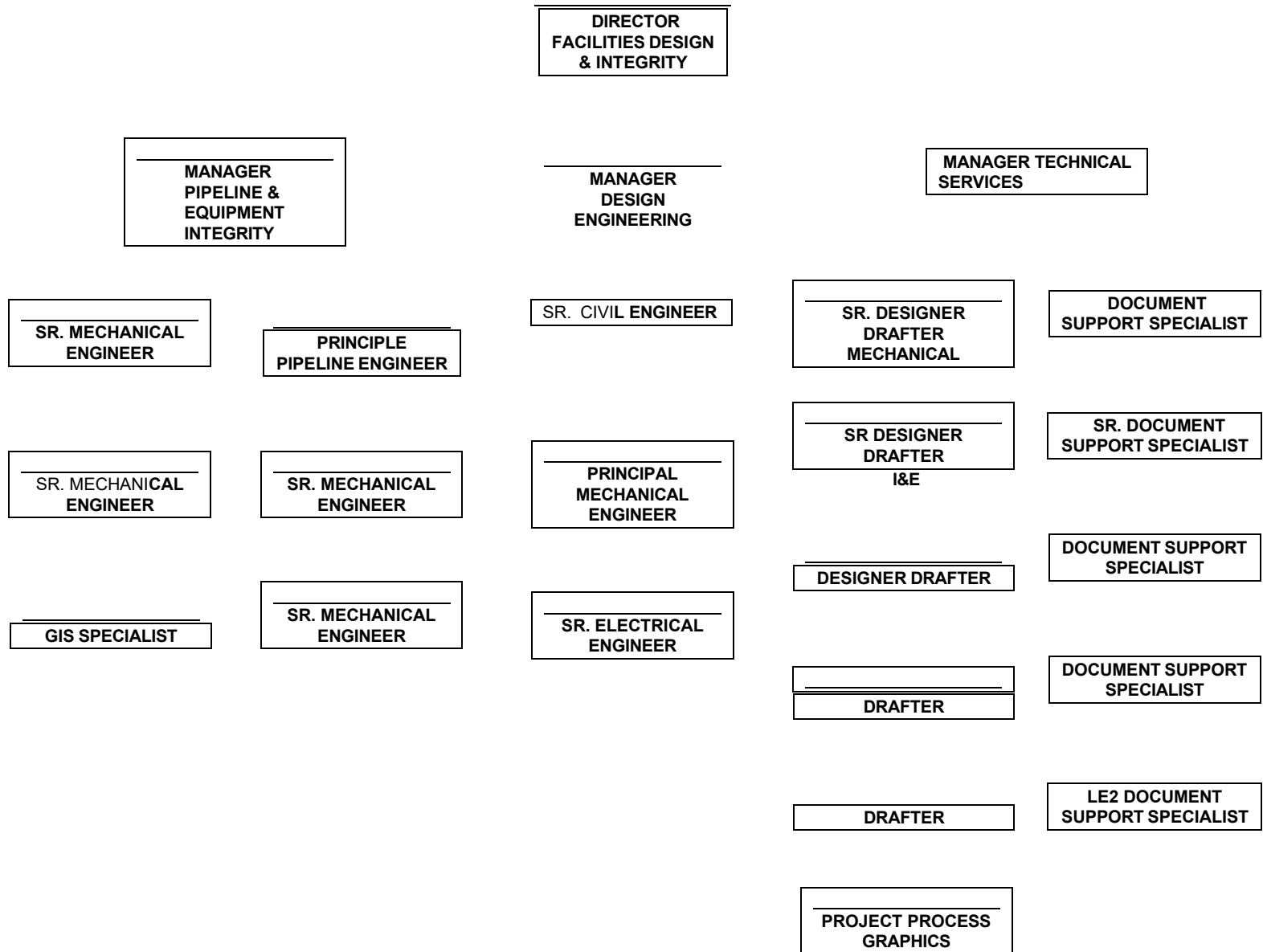
SECURITY



CONTRACTOR ASSURANCE SYSTEMS (CAS) AND QUALITY ASSURANCE (QA)



**ENGINEERING & PROJECTS
MECHANICAL PIPELINE & CIVIL ENGINEERING
AND TECHNICAL SERVICES**



**ENGINEERING & PROJECTS
OPERATIONAL SYSTEMS**

**MANAGER
OPERATIONAL
SYSTEMS**

**PRINCIPAL PROCESS
SAFETY ENGINEER**

**PRINCIPAL RAM
ENGINEER**

**PRINCIPAL
OPERATIONAL
SYSTEMS
ENGINEER**

**PRINCIPAL
OPERATIONAL
SYSTEMS
ENGINEER**

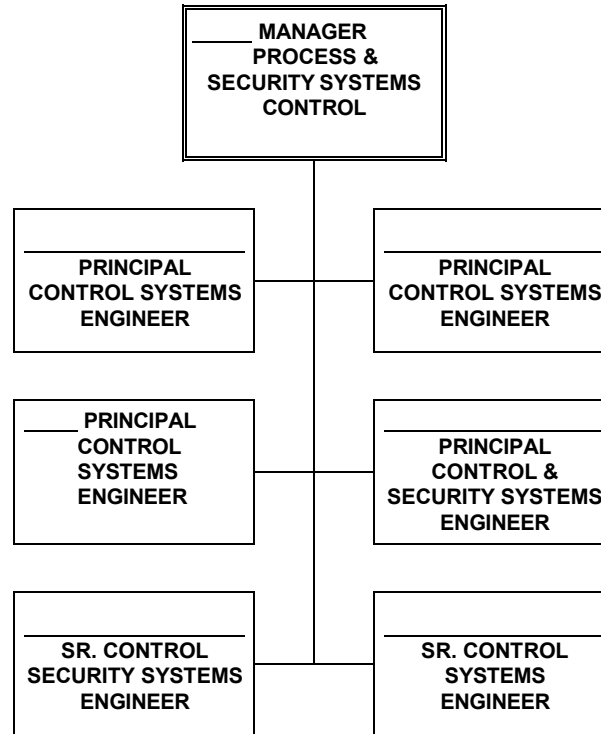
90040

**OPERATIONAL
SYSTEMS
ENGINEER**

**LE2 SR. PROCESS
SAFETY ENGINEER**

**PRINCIPAL
OPERATIONS
SYSTEMS ENGINEER**

**ENGINEERING & PROJECTS
ELECTRICAL & CONTROL DESIGN**



PROJECT EXECUTION

DIRECTOR
PROJECT EXECUTION

PROJECT ENGINEER

MANAGER
ESTIMATING AND
PROJECT CONTROL

PROJECT ENGINEER

SR. ESTIMATOR

SR. PROJECT ENGINEER

ESTIMATOR

SR. CONSRUCTION
FIELD SPECIALIST

PROJECT CONTROL
SUPPORT ENGINEER

SR. PROJECT SUPPORT
SPECIALIST

SR PROJECT
CONTROLS SPECIALIST

OPERATIONS AND MAINTENANCE

APM OPERATIONS
& MAINTENANCE

O&M SUPPORT
SPECIALIST

SITE DIRECTOR
(BRYAN MOUND)

SR. DIRECTOR
CAVERN INTEGRITY

SITE DIRECTOR
(WEST HACKBERRY)

SR. DIRECTOR
OPERATIONS

SR. SITE DIRECTOR
(BAYOU CHOCTAW)

MANAGER
MAINTENANCE &
INTEGRATED
LOGISTICS

SITE DIRECTOR
(BIG HILL)

MANAGER
MAINTENANCE
PROJECTS AND
FACILITIES

**OPERATIONS AND MAINTENANCE
OPERATIONS**

SR. DIRECTOR
OPERATIONS

MANAGER FIELD
OPERATIONS

MANAGER CRUDE
OIL PROGRAMS
& LOGISTICS

SR. OPERATIONS
RESEARCH ANALYST

SR. OPERATIONS
RESEARCH ANALYST

**OPERATIONS AND MAINTENANCE
FIELD OPERATIONS**

**_MANAGER FIELD
OPERATIONS**

**_SR. OCC
ADMINISTRATOR**

**SR. OPERATIONS
PLANNER**

**SR. OCC
ADMINISTRATOR**

**SR. OPERATIONS
PLANNER**

**OPERATIONS AND MAINTENANCE
CRUDE OIL LOGISTICS**

**MANAGER CRUDE OIL
PROGRAMS
& LOGISTICS**

**SR. CRUDE OIL
QUALITY ENGINEER
(3rd Party Inspection)**

**CRUDE OIL
TRANSPORTATION
SCHEDULER**

**SR. CRUDE OIL
QUALITY**

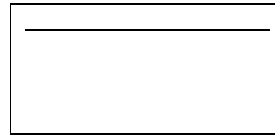
**DISTRIBUTION
SYSTEMS SPECIALIST**

**SR. TRANSPORTATION
MANAGEMENT
SPECIALIST**

**SR. CRUDE OIL
ACCOUNTING ANALYST**

**CRUDE OIL PROGRAM
ANALYST**

**OPERATIONS AND MAINTENANCE
PROJECTS
AND
FACILITIES & FIELD SUPPORT**



**SR. PROJECTS
MANAGEMENT
ENGINEER**

**SUPERVISOR
FACILITIES & FIELD
SUPPORT**

**SR. ELECTRICAL
MAINTENANCE
TECHNOLOGIST**

**PAINING AND
CORROSION
CONTROL SPECIALIST**

**MAINTENANCE
MECHANIC
(RECOVERY)**

**MAINTENANCE
MECHANIC
(RECOVERY)**

**MAINTENANCE
MECHANIC
(RECOVERY)**

**OPERATIONS AND MAINTENANCE
MAINTENANCE & INTERGRATED LOGISTICS**

**MANAGER
MAINTENANCE &
INTEGRATED
LOGISTICS**

**PRINCIPAL
MAINTENANCE
ELECTRICAL ENGINEER**

**SR. MECHANICAL
TECHNICAL
SPECIALIST
(ROTATING EQUIP.)**

**SR. MATERIAL
ANALYST**

**SR. MECHANICAL
MAINTENANCE
ENGINEER**

**SR. ILS/LAM
ENGINEER**

**PRINCIPAL
MECHANICAL
MAINTENANCE
ENGINEER**

LOGISTICS ANALYST

**ISL/LAM TECHNICAL
SPECIALIST**

MATERIALS ANALYST

CAVERN INTEGRITY

SR. DIRECTOR
CAVERN INTEGRITY

LE2 SUBSURFACE
WORK PACKAGE
MANAGER

LE2 SUBSURFACE
PROJECT ENGINEER

WORK PROGRAM

CAVERN INTEGRITY
SUBCONTRACT
TECHNICAL REP

WORKOVER WELL
SITE LEADER

WORKOVER WELL
SITE LEADER (WH)

SR. CAVERN PROJECT
ENGINEER

MANAGER
CAVERN FIELD
OPERATIONS

SITE CAVERN
ENGINEER

SR. SITE CAVERN
ENGINEER
(BC)

SR. SITE CAVERN
ENGINEER
(BH)

MANAGER
CAVERN PLANNING
& ANALYSIS

SR. CAVERN ENGINEER

CAVERN DATA ANALYSIS
ENGINEER II

SR. CAVERN DATA
ANALYSIS ENGINEER

SR. CAVERN DATA
ANALYST ENGINEER

BRYAN MOUND

SITE DIRECTOR

**MANAGER SUPPORT
MANAGEMENT**

**MANAGER SITE
OPERATIONS**

**MANAGER SITE
MAINTENANCE**

**MANAGER SITE ES&H/
TECH SERV.**

**MANAGER SITE
CONSTRUCTION**

**SITE SECURITY
SPECIALIST**

**SUPERVISOR SITE
ENGINEER**

SR. DRAFTER

**BRYAN MOUND
SUPPORT MANAGEMENT**

**MANAGER SUPPORT
MANAGEMENT**

**SITE SUPPORT
SPECIALIST**

**SUPERVISOR PROPERTY
& MATERIAL**

**SR. SUBCONTRACT
ADMINISTRATOR**

**SITE TRAINING
COORDINATOR**

LEAD STOREKEEPER

STOREKEEPER

STOREKEEPER

BRYAN MOUND OPERATIONS

MANAGER SITE
OPERATIONS

SUPERINTENDENT
OPERATIONS
EMERGENCY
RESPONDER

SUPERVISOR
OPERATIONS
EMERGENCY
RESPONDER

SUPERVISOR
OPERATIONS
EMERGENCY
RESPONDER

_SUPERVISOR
OPERATIONS
EMERGENCY
RESPONDER

SUPERVISOR
OPERATIONS

SITE OPERATIONS
TECHNICIAN
EMERGENCY
RESPONDER

CONTROL ROOM
OPERATOR
EMERGENCY
RESPONDER

CONTROL ROOM
OPERATOR
EMERGENCY
RESPONDER

CONTROL ROOM
OPERATOR
EMERGENCY
RESPONDER

CONTROL ROOM
OPERATOR
EMERGENCY
RESPONDER

CONTROL ROOM
OPERATOR
EMERGENCY
RESPONDER

OPERATOR
EMERGENCY
RESPONDER

OPERATOR
EMERGENCY
RESPONDER

OPERATOR
EMERGENCY
RESPONDER

_OPERATOR
EMERGENCY
RESPONDER

OPERATOR
EMERGENCY
RESPONDER

OPERATOR
EMERGENCY
RESPONDER

OPERATOR
EMERGENCY
RESPONDER

OPERATOR
EMERGENCY
RESPONDER

OPERATOR
EMERGENCY
RESPONDER

OPERATOR
EMERGENCY
RESPONDER

OPERATOR
EMERGENCY
RESPONDER

_OPERATOR
EMERGENCY
RESPONDER

OPERATOR
EMERGENCY
RESPONDER

OPERATOR
EMERGENCY
RESPONDER (LE2)

PROJECT OPERATOR
EMERGENCY
RESPONDER

BRYAN MOUND MAINTENANCE

MANAGER SITE
MAINTENANCE

SUPERVISOR SITE
MAINTENANCE
(INST. & ELEC.)

SUPERVISOR SITE
MAINTENANCE
(MECH/GENERAL)

LEAD I&E
TECHNICIAN

LEAD I&E
TECHNICIAN

MAINTENANCE PLANNER
SCHEDULER

LEAD MAINTENANCE
MECHANIC

MAINTENANCE
MECHANIC
ERT

SITE MAINTENANCE
TECHNICIAN (GENERAL
EQUIP.) /ERT

I&E TECHNICIAN
EMERGENCY
RESPONDER

I&E TECHNICIAN
EMERGENCY
RESPONDER

SITE PLANNER
SCHEDULER

MAINTENANCE
MECHANIC

MAINTENANCE
MECHANIC

MAINTENANCE
MECHANIC EMERGENCY
RESPONDER

I&E TECHNICIAN

I&E TECHNICIAN
EMERGENCY
RESPONDER

MAINTENANCE PLANNER
SCHEDULER

MAINTENANCE
MECHANIC (Entry)
EMERGENCY
RESPONDER

MAINTENANCE
MECHANIC

WELDER
EMERGENCY
RESPONDER

I&E TECHNICIAN
EMERGENCY
RESPONDER

I&E TECHNICIAN
ENTRY/EMERGENCY
RESPONDER

MAINTENANCE
MECHANIC EMERGENCY
RESPONDER

MILLWRIGHT
EMERGENCY
RESPONDER

WELDER EMERGENCY
RESPONDER

MAINTENANCE
MECHANIC
EMERGENCY
RESPONDER

GROUND MAINTENANCE
HELPER

PAINTER MAINTENANCE
HELPER

GROUND
MAINTENANCE
HELPER

PAINTER MAINTENANCE
HELPER

GROUND
MAINTENANCE
HELPER

**BRYAN MOUND
ENVIRONMENTAL SAFETY & HEALTH/TECH
SERVICES**

MANAGER SITE
ES&H/TECH. SERV.

SITE SAFETY
SPECIALIST

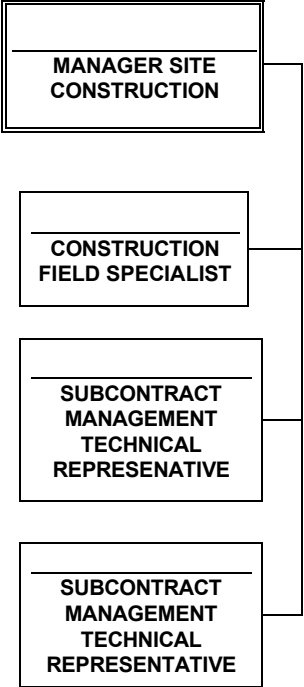
SITE SAFETY
SPECIALIST

SITE SAFETY
SPECIALIST

SITE ENVIRONMENTAL
PROGRAM SPEC/
SITE CHEMIST

SITE FIRE PROTECTION /
EMERGENCY MGMT
SPECIALIST
EMERGENCY RESPONDER

**BRYAN MOUND
CONSTRUCTION**



BIG HILL

SITE DIRECTOR

SITE SECURITY
SPECIALIST

MANAGER
SUPPORT
MANAGEMENT

MANAGER SITE
OPERATIONS

MANAGER SITE
MAINTENANCE

MANAGER SITE
ES&H

MANAGER SITE
CONSTRUCTION

SUPERVISOR SITE
ENGINEER

SR. SITE DRAFTER

**BIG HILL
SUPPORT MANAGEMENT**

MANAGER SUPPORT
MANAGEMENT

SR. SUBCONTRACT
ADMINISTRATOR
(BH)

SR. SITE SUPPORT
SPECIALIST

SITE TRAINING
COORDINATOR

SR. SITE COST &
SCHEDULES
ANALYST

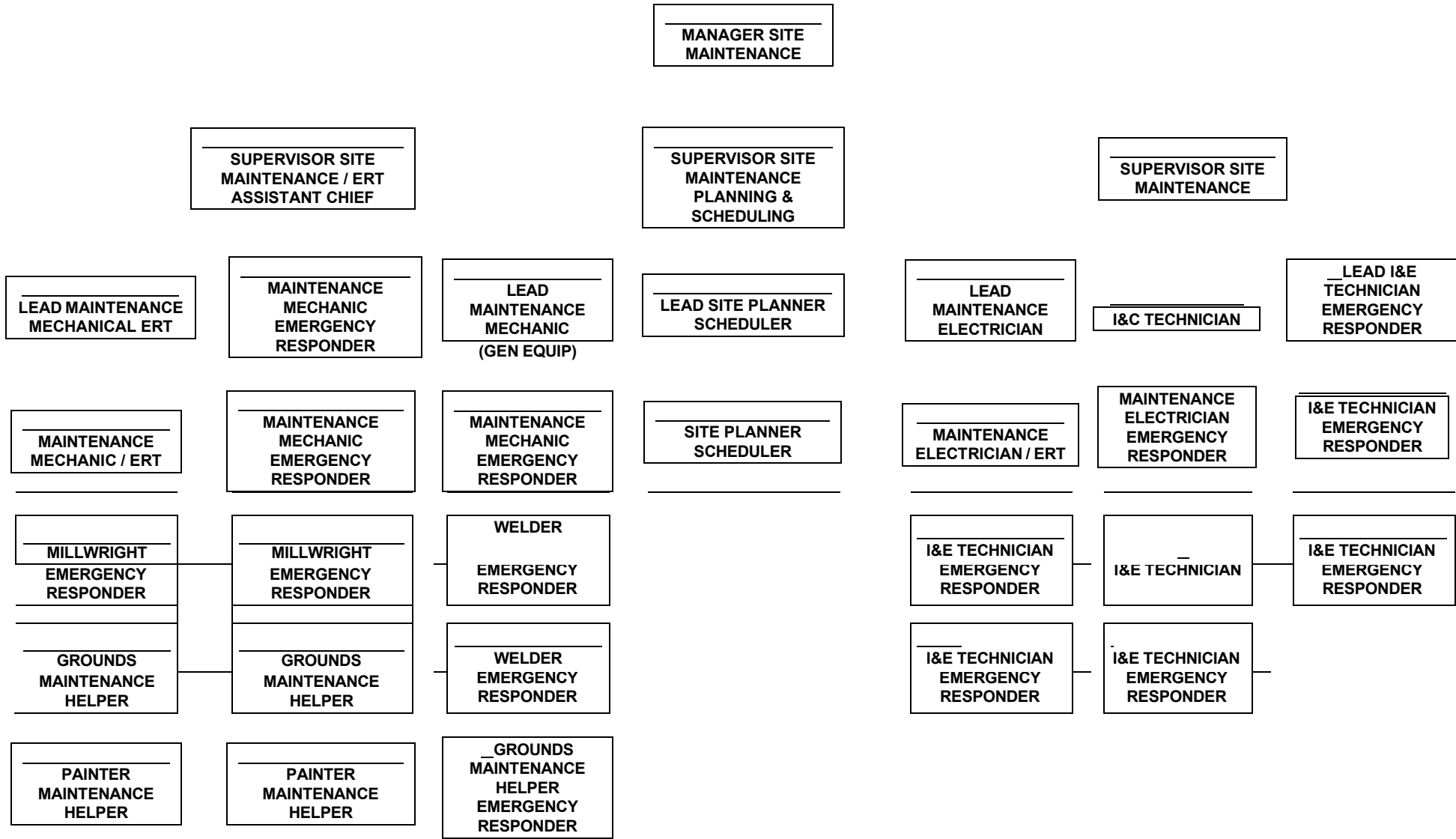
SUPERVISOR
PROPERTY &
MATERIAL

LEAD STOREKEEPER

STOREKEEPER

STOREKEEPER

BIG HILL MAINTENANCE



**BIG HILL
ENVIRONMENTAL SAFETY & HEALTH**

MANAGER SITE ES&H

SITE FIRE PROTECTION
SPECIALIST
EMERGENCY
RESPONDER

SITE CHEMIST

SITE SAFETY
SPECIALIST
ERT

SITE SAFETY
SPECIALIST

SITE SAFETY
SPECIALIST

BIG HILL OPERATIONS

MANAGER SITE
OPERATIONS

SUPERINTENDENT
OPERATIONS

SUPERVISOR
OPERATIONS

SUPERVISOR
OPERATIONS

SUPERVISOR
OPERATIONS

SUPERVISOR
OPERATIONS
EMERGENCY
RESPONDER

CONTROL ROOM
OPERATOR

CONTROL ROOM
OPERATOR
EMERGENCY
RESPONDER

CONTROL ROOM
OPERATOR

CONTROL ROOM
OPERATOR

CONTROL ROOM
OPERATOR

OPERATOR
EMERGENCY
RESPONDER

OPERATOR
EMERGENCY
RESPONDER

OPERATOR
EMERGENCY
RESPONDER

OPERATOR
EMERGENCY
RESPONDER

OPERATOR
EMERGENCY
RESPONDER

SITE OPERATIONS
TECHNICIAN

OPERATOR
EMERGENCY
RESPONDER

OPERATOR
EMERGENCY
RESPONDER (LE2)

OPERATOR
EMERGENCY
RESPONDER

CONTROL ROOM
OPERATOR

OPERATOR
EMERGENCY
RESPONDER

OPERATOR
EMERGENCY
RESPONDER (LE2)

OPERATOR
EMERGENCY
RESPONDER

OPERATOR
EMERGENCY
RESPONDER (LE2)

OPERATOR
EMERGENCY
RESPONDER

OPERATOR
EMERGENCY
RESPONDER

**BIG HILL
CONSTRUCTION**

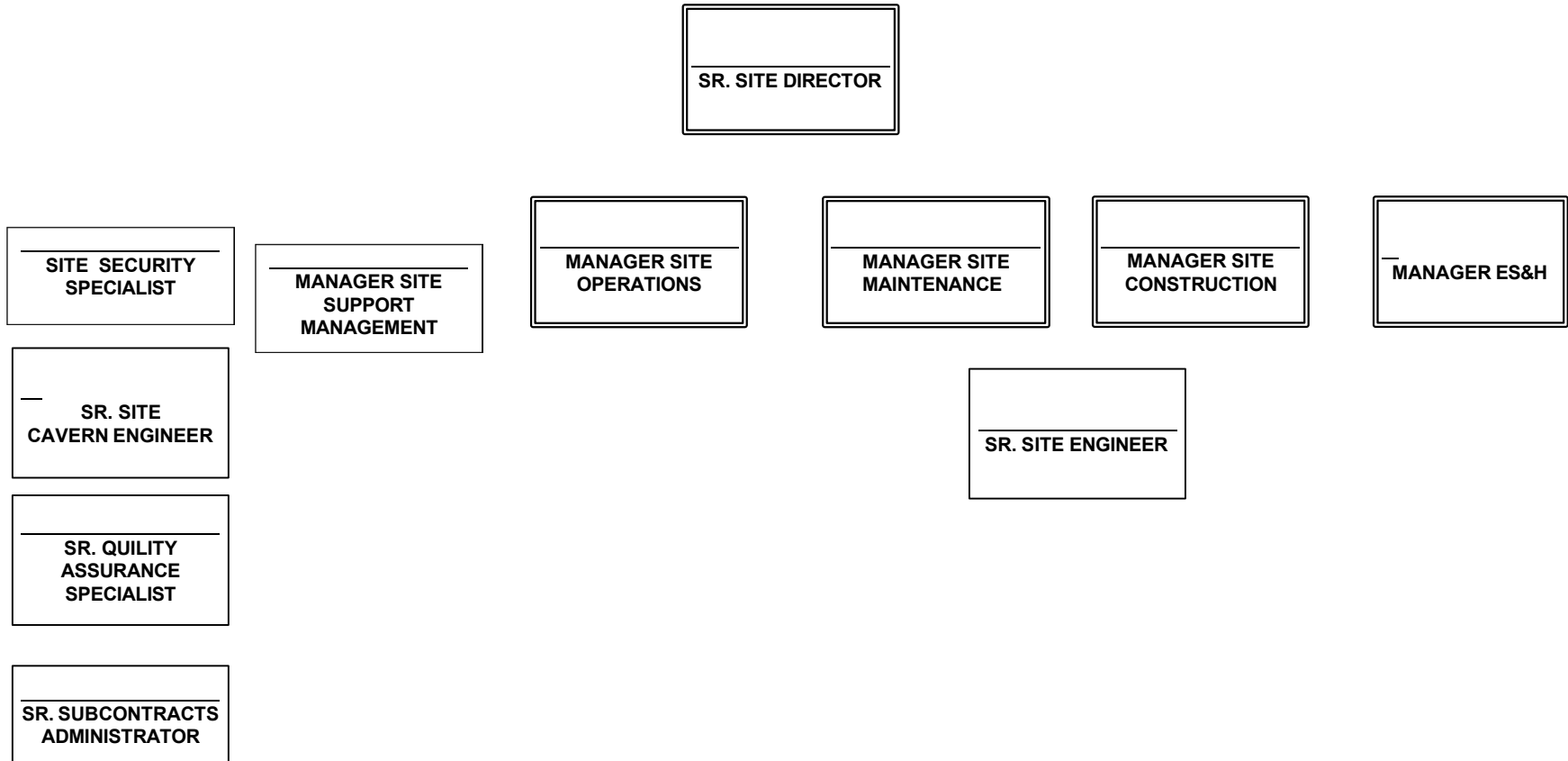
**MANAGER SITE
CONSTRUCTION**

**CONSTRUCTION FIELD
SPECIALIST**

**SUBCONTRACT MANAGER
TECHNICAL
REPRESENTATIVE**

**SUBCONTRACT
MANAGEMENT
TECHNICAL
REPRESENTATIVE**

BAYOU CHOCTAW



**BAYOU CHOCTAW
SUPPORT MANAGEMENT**

MANAGER
SUPPORT
MANAGEMENT

SUPERVISOR
PROPERTY &
MATERIAL

SITE SUPPORT
SPECIALIST

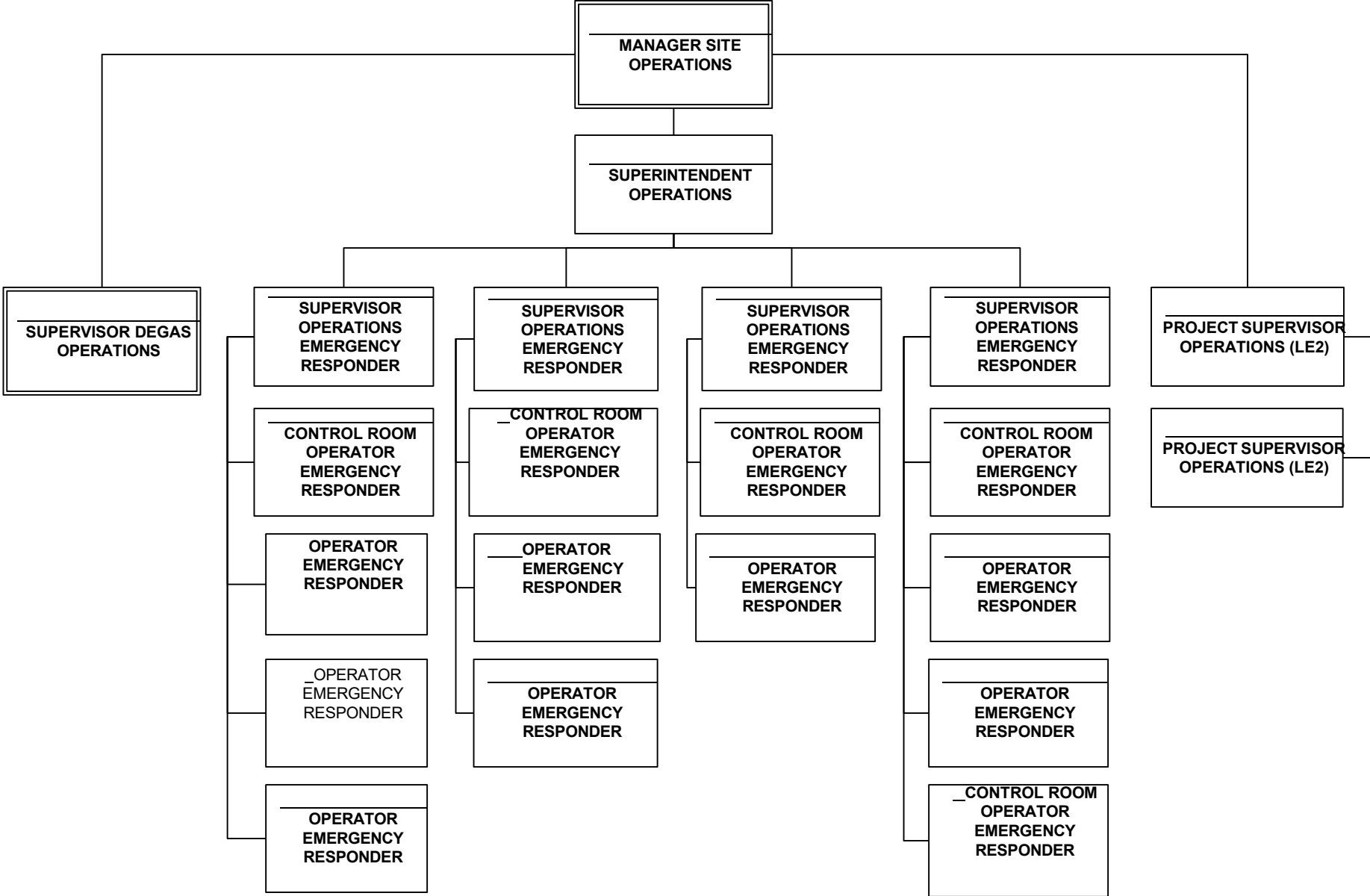
SITE TRAINING
COORDINATOR

LEAD
STOREKEEPER

SITE COST &
SCHEDULE
ANALYST

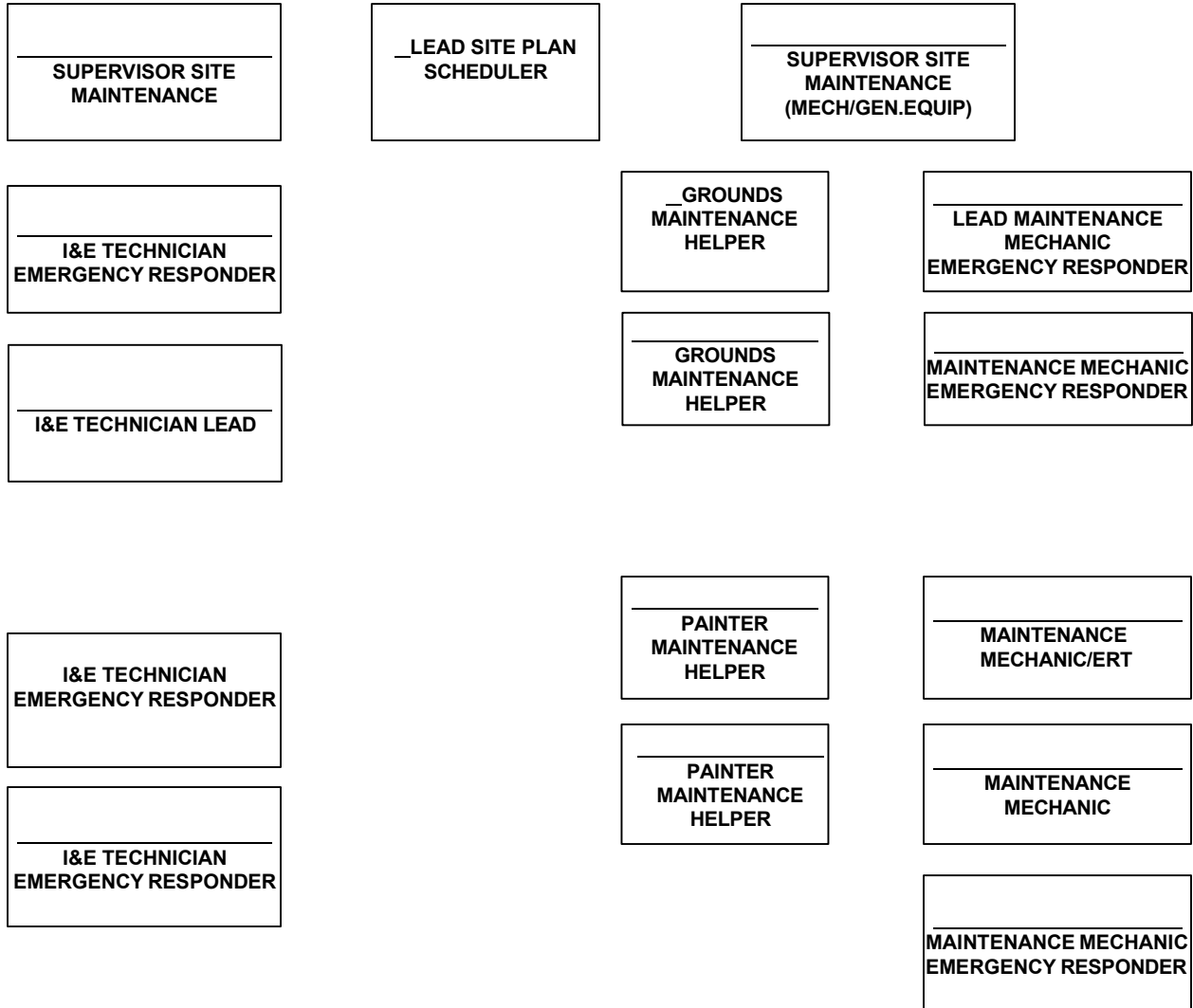
STOREKEEPER ERT

**BAYOU CHOCTAW
OPERATIONS**



BAYOU CHOCTAW MAINTENANCE

MANAGER SITE MAINTENANCE



**BAYOU CHOCTAW
ENVIRONMENTAL SAFETY AND HEALTH**

MANAGER ES&H

SITE SAFETY
SPECIALIST

ENVIRONMENTAL
PROGRAMS ANALYST/
SITE CHEMIST

SITE SAFETY
SPECIALIST

Site Fire Protection
Emergency Management
Specialist

**BAYOU CHOCTAW
CONSTRUCTION**

**MANAGER SITE
CONSTRUCTION**

**SUBCONTRACT
MANAGER TECHNICAL
REP. CONSTRUCTION
SPECIALIST / ERT**

**SUBCONTRACT
MANAGER TECHNICAL
REPRESENTATIVE**

**BAYOU CHOCTAW
DEGAS OPERATIONS**

SUPERVISOR DEGAS
OPERATIONS

CONTROL ROOM
OPERATOR DEGAS

CONTROL ROOM
OPERATOR DEGAS

CONTROL ROOM
OPERATOR DEGAS

CONTROL ROOM
OPERATOR DEGAS

CONTROL ROOM
OPERATOR DEGAS

OPERATOR/
EMERGENCY
RESPONDER DEGAS

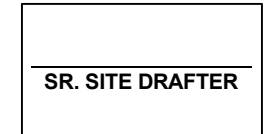
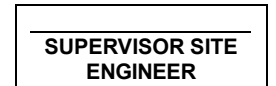
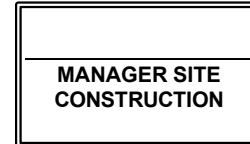
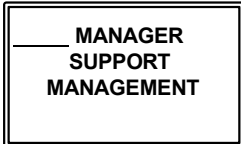
OPERATOR/
EMERGENCY
RESPONDER DEGAS

OPERATOR DEGAS

OPERATOR/
EMERGENCY
RESPONDER
DEGAS

BIG HILL

78203



**BIG HILL
SUPPORT MANAGEMENT**

MANAGER SUPPORT
MANAGEMENT

SR. SUBCONTRACT
ADMINISTRATOR
(BH)

SR. SITE SUPPORT
SPECIALIST

SITE TRAINING
COORDINATOR

SR. SITE COST &
SCHEDULES
ANALYST

SUPERVISOR
PROPERTY &
MATERIAL

LEAD STOREKEEPER

STOREKEEPER

STOREKEEPER

**BIG HILL
CONSTRUCTION**

**MANAGER SITE
CONSTRUCTION**

**CONSTRUCTION FIELD
SPECIALIST**

**SUBCONTRACT MANAGER
TECHNICAL
REPRESENTATIVE**

**SUBCONTRACT
MANAGEMENT
TECHNICAL
REPRESENTATIVE**